


APP CRS	Rwy Idg	8950
042°	TDZE	9
	Apt Elev	13

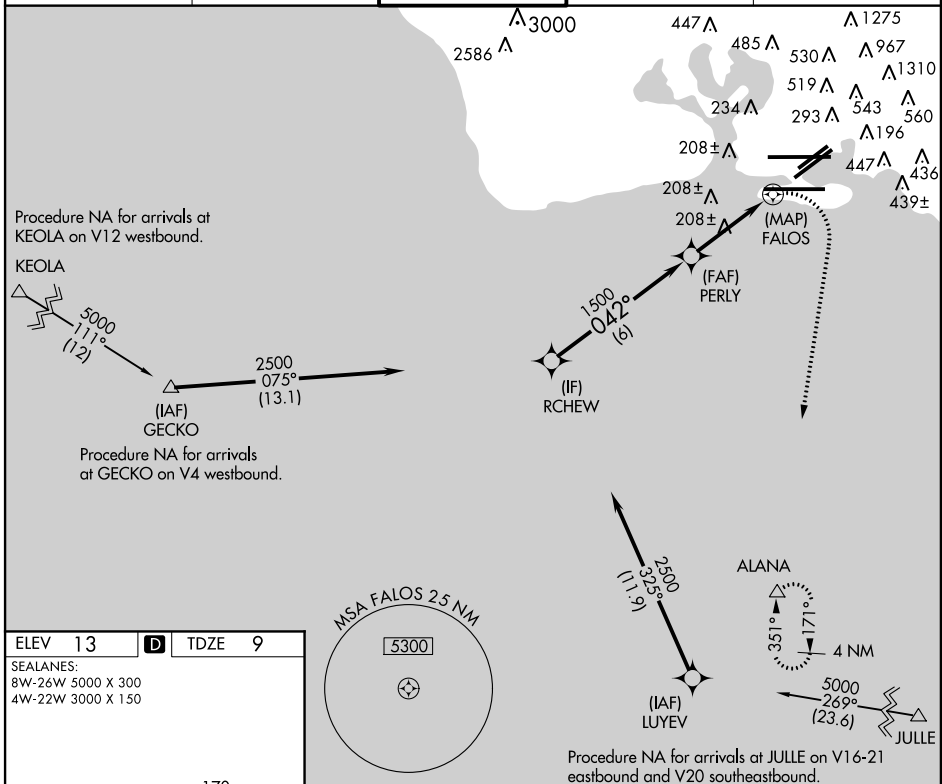
RNAV (GPS) Y RWY 4R

HONOLULU INTL (HNL) (PHNL)

▼ For inoperative MALS, increase LNAV Cat E visibility to 2½ mile.
▲ DME/DME RNP-0.3 NA. Circling Cat A, B, C NA northwest of airport between Rwy 8L-26R and 4L-22R.
 Circling Cat D, E NA north of Rwy 8L-26R.

MALS
 MISSED APPROACH: Climbing right turn to 3000 direct ALANA and hold.

ATIS 127.9 251.15	HCF APPROACH 118.3 269.0	HONOLULU TOWER 118.1 257.8	GND CON 121.9 348.6	CLNC DEL 121.4 281.4
-----------------------------	------------------------------------	--------------------------------------	-------------------------------	--------------------------------

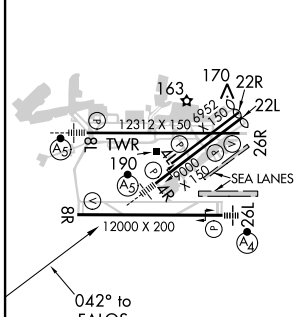


PAC, 29 MAY 2014 to 24 JUL 2014

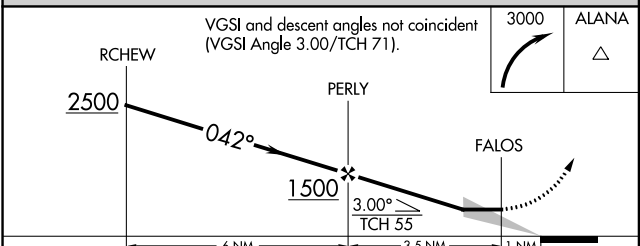
PAC, 29 MAY 2014 to 24 JUL 2014

ELEV 13	D	TDZE 9
---------	----------	--------

SEALANES:
 8W-26W 5000 X 300
 4W-22W 3000 X 150



MIRL Rwy 4L-22R
 REIL Rwy 4L, 8R, 22L, 22R and 26R
 HIRL Rwy 4R-22L, 8L-26R and 8R-26L



CATEGORY	A	B	C	D	E
LNAV MDA	460-¾	451 (500-¾)	460-⅞	451 (500-⅞)	
CIRCLING	620-1¼	607 (700-1¼)	620-1¾	820-2½	1760-3
			607 (700-1¾)	807 (900-2½)	1747 (1800-3)