


APP CRS	Rwy Idg	8950
042°	TDZE	9
	Apt Elev	13

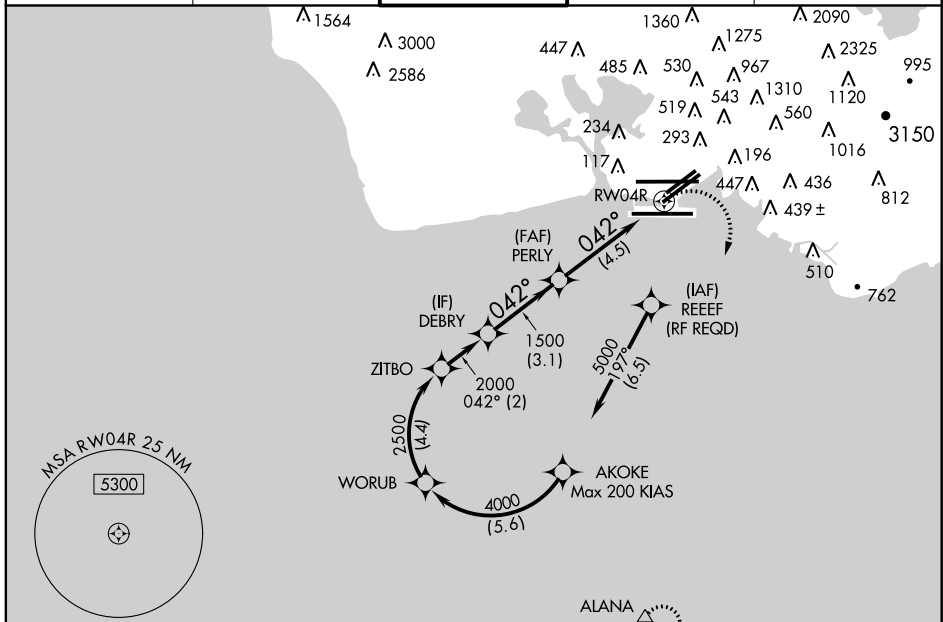
RNAV (RNP) Z RWY 4R

HONOLULU INTL (HNL) (PHNL)

▼ For uncompensated Baro-VNAV systems, procedure NA below 16° C (61° F) or above 43° C (110° F). For inoperative MALS/R, increase RNP 0.30 Cat A visibility to 3/4 mile; increase Cat B/C visibility to 7/8 mile; increase Cat D visibility to 1 7/8 mile. GPS required.

MALS/R
 MISSED APPROACH: Climb to 580 then climbing right turn to 3000 direct ALANA and hold.

ATIS 127.9 251.15	HCF APPROACH 118.3 269.0	HONOLULU TOWER 118.1 257.8	GND CON 121.9 348.6	CLNC DEL 121.4 281.4
-----------------------------	------------------------------------	--------------------------------------	-------------------------------	--------------------------------

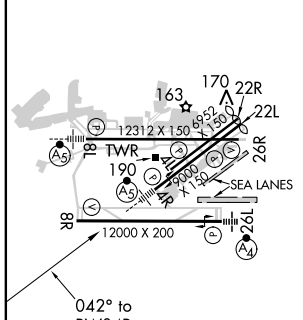


PAC, 29 MAY 2014 to 24 JUL 2014

PAC, 29 MAY 2014 to 24 JUL 2014

ELEV	13	D	TDZE	9
------	-----------	----------	------	----------

SEALANES:
 8W-26W 5000 X 300
 4W-22W 3000 X 150



MIRL Rwy 4L-22R
 REIL Rwy 4L, 8R, 22R and 26R
 HIRL Rwy 4R-22L, 8L-26R and 8R-26L



DEBRY	VGSI and RNAV glidepath not coincident (VGSI Angle 3.00/TCH 71).			580	3000	ALANA
2000	042°			1500		
GP 3.00°						
TCH 55						
	3.1 NM		4.5 NM			
CATEGORY	A	B	C	D		
RNP 0.30 DA	266-1/2 257 (300-1/2)	287-1/2 278 (300-1/2)	321-1/2 312 (400-1/2)	575-1 1/2 566 (600-1 1/2)		

AUTHORIZATION REQUIRED