

APP CRS	Rwy Idg	12000
259°	TDZE	10
	Apt Elev	13

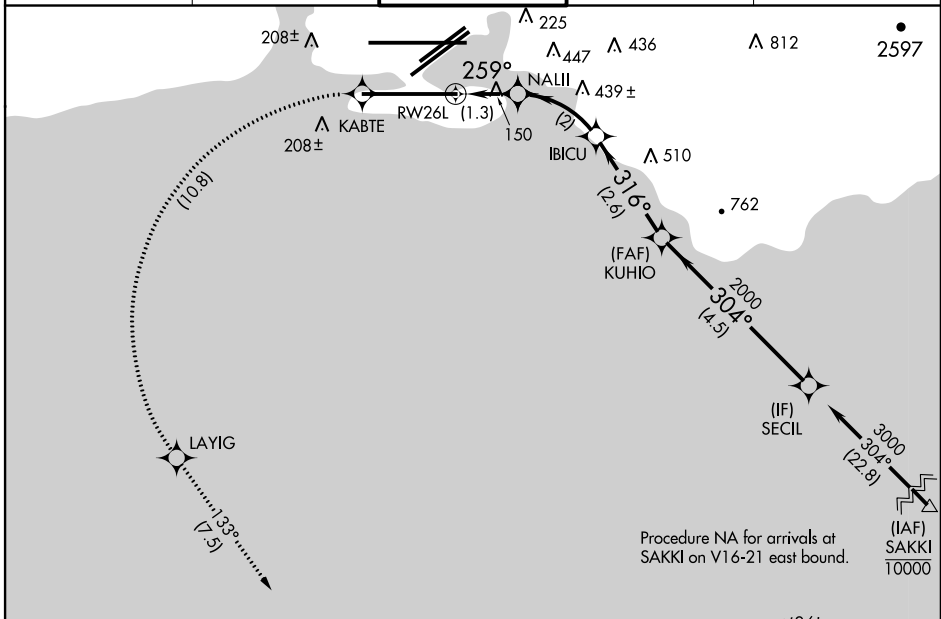
RNAV (RNP) RWY 26L

HONOLULU INTL (HNL) (PHNL)

RF and GPS required. For uncompensated Baro-VNAV systems, procedure NA below 15° C (58° F) or above 49° C (121° F).
NA For inoperative MALSF, increase RNP 0.15 visibility to 1 all Cats.
 *Missed approach requires a minimum climb of 234' per NM to 300.

MALSF MISSED APPROACH: Climb to 3000 via 259° track to KABTE, left turn via 4.9 radius to LAYIG, 133° track to ALANA and hold.

ATIS 127.9 251.15	HCF APPROACH 118.3 269.0	HONOLULU TOWER 118.1 257.8	GND CON 121.9 348.6	CLINC DEL 121.4 281.4
-----------------------------	------------------------------------	--------------------------------------	-------------------------------	---------------------------------

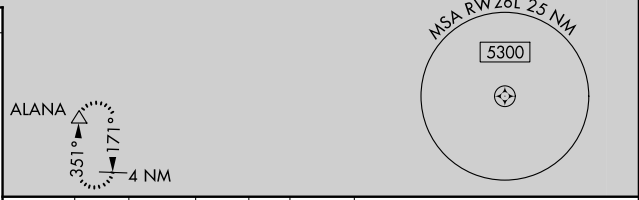
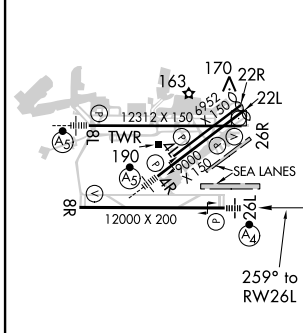


PAC, 29 MAY 2014 to 24 JUL 2014

PAC, 29 MAY 2014 to 24 JUL 2014

ELEV 13	D	TDZE 10
---------	----------	---------

SEALANES:
 8W-26W 5000 X 300
 4W-22W 3000 X 150



3000 ↑ 259° tr	KABTE	LAYIG	133° tr	ALANA	KUHIO	SECIL
RW26L		NALII	IBICU	2000		3000
1.3 NM		2 NM	2.6 NM	4.5 NM		Procedure Turn NA
CATEGORY		A	B	C	D	GP 3.00° TCH 75
RNP 0.15 DA*		260-1/2		250 (300-1/2)		

MIRL Rwy 4L-22R
 REIL Rwy 4L, 8R, 22L, 22R and 26R
 HIRL Rwy 4R-22L, 8L-26R and 8R-26L

AUTHORIZATION REQUIRED