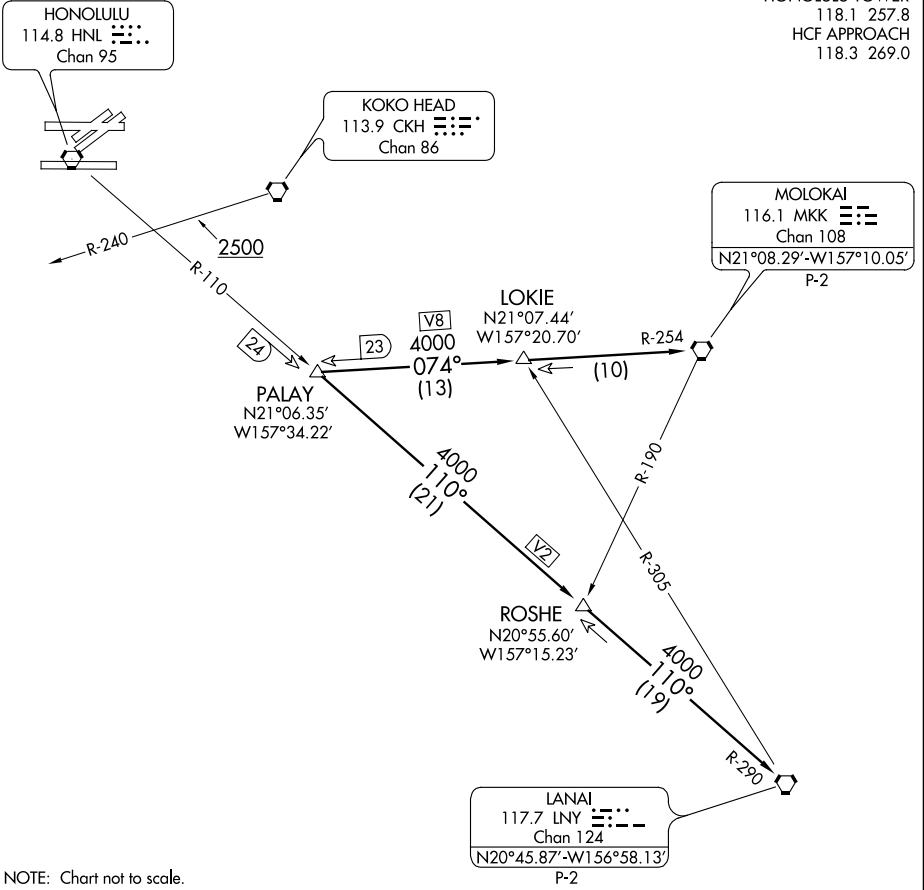


PALAY TWO DEPARTURE

NOTE: Departures from Runways 4L/R and 8L/R must complete right turn to assigned heading within 2 NM of runway departure end (HNL 3.6 DME).
 Cross CKH R-240 at or above 2500'.
 Departures from Runways 26L/R must complete left turn to assigned heading within 2 NM of runway departure end (HNL 3 DME).

ATIS 127.9 251.15
 CLNC DEL 121.4 281.4
 GND CON 121.9 348.6
 HONOLULU TOWER 118.1 257.8
 HCF APPROACH 118.3 269.0



PAC, 29 MAY 2014 to 24 JUL 2014

PAC, 29 MAY 2014 to 24 JUL 2014

NOTE: Chart not to scale.

DEPARTURE ROUTE DESCRIPTION

Turn right/left to heading as assigned by tower, expect vectors to PALAY INT, maintain 5000'; then via (transition). Expect clearance to enroute altitude/flight level at LNY VORTAC.

LANAI TRANSITION (PALAY2.LNY): From over PALAY INT via HNL R-110 and LNY R-290 to LNY VORTAC.

MOLOKAI TRANSITION (PALAY2.MKK): From over PALAY INT via MKK R-254 to MKK VORTAC.