

OPIHI TWO DEPARTURE

PAC, 29 MAY 2014 to 24 JUL 2014

ATIS
127.9 251.15
CLNC DEL
121.4 281.4
GND CON
121.9 348.6
HONOLULU TOWER
118.1 257.8
HGF APPROACH
118.3 269.0

NOTE: Honolulu departures from Rwy's 4L/R and 8L/R must complete right turn to assigned heading within 2 NM of departure end of runway (HNL 3.6 DME). Cross CKH R-240 at or above 2500'.

NOTE: Honolulu departures Rwy's 26L/R left turn to assigned heading must be completed within 2 NM of departure end of runway (HNL 3 DME).

SOUTH KAUIAI
115.4 SOK
Chan 101

KOKO HEAD
113.9 CKH
Chan 86

MOLOKAI
116.1 MKK
Chan 108

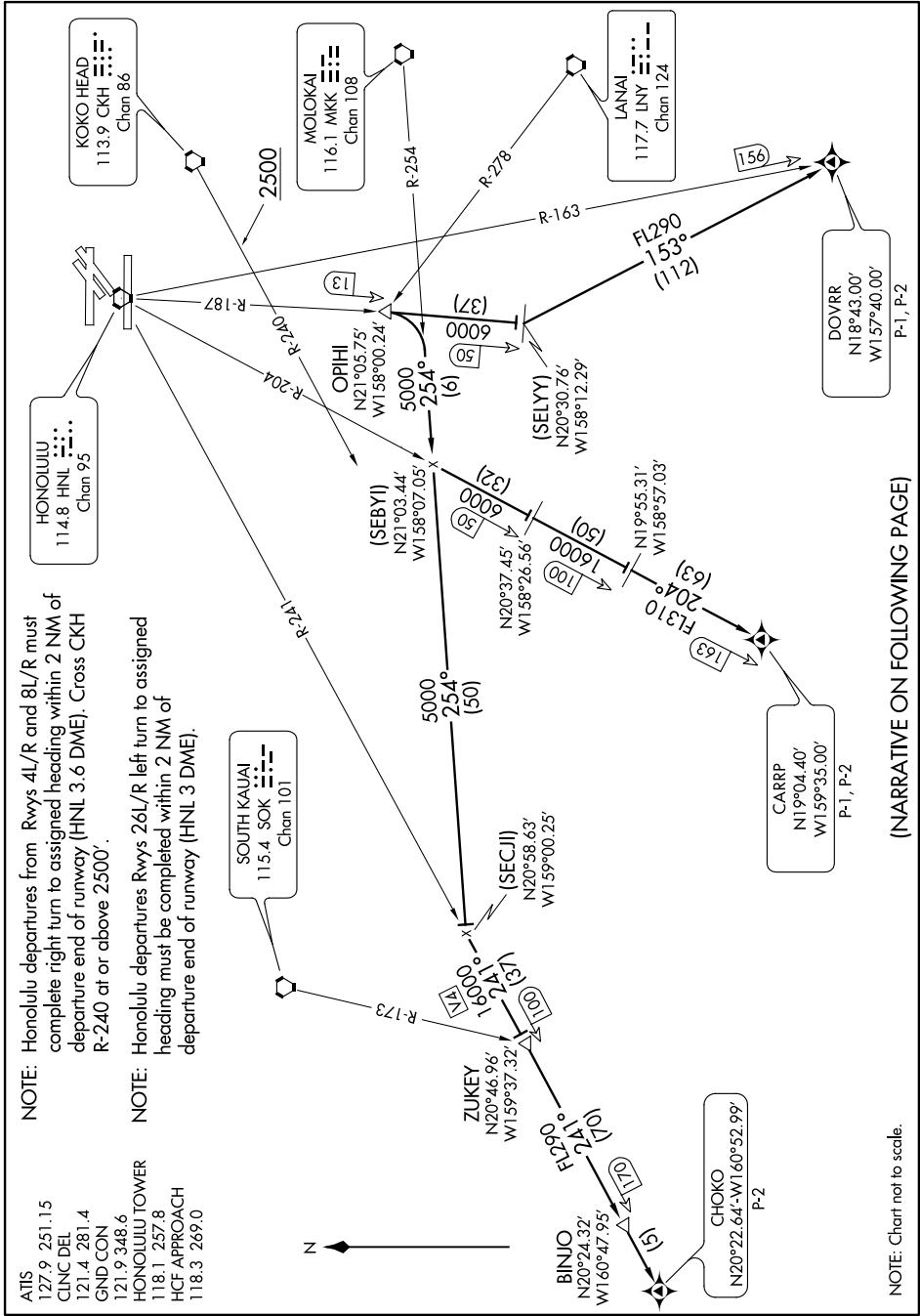
LANAI
117.7 LNY
Chan 124

HONOLULU
114.8 HNL
Chan 95

DOVRR
N18°43.00'
W157°40.00'
P-1, P-2

CARRP
N19°04.40'
W159°35.00'
P-1, P-2

CHOKO
N20°22.64'-W160°52.99'
P-2



(NARRATIVE ON FOLLOWING PAGE)

NOTE: Chart not to scale.

PAC, 29 MAY 2014 to 24 JUL 2014