

LDA/DME RWY 26L

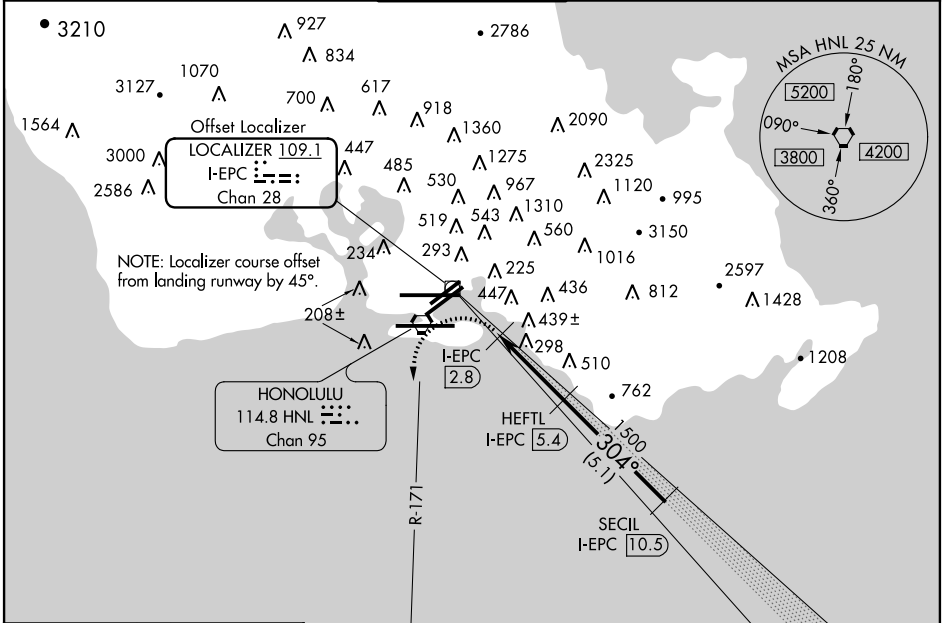
HONOLULU INTL (HNL) (PHNL)

LOC/DME I-EPC 109.1 Chan 28	APP CRS 304°	Rwy Idg 12000 TDZE 10 Apt Elev 13
--	------------------------	--

▼ Cat. A, B, C circling not authorized northwest of airport between Rws 8L/26R and 4L/22R. Cat. D, E circling not authorized north of Rwy 8L/26R. Inoperative table does not apply to MALSF. Follow flasher lights to Rwy 26L. Procedure not authorized at night when MALSF inoperative.

MALSF
MISSED APPROACH: Climbing left turn to 3000 via HNL R-171 to ALANA INT/HNL 13.9 DME and hold.

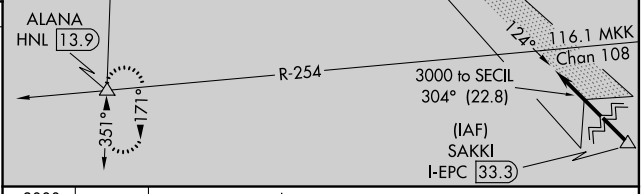
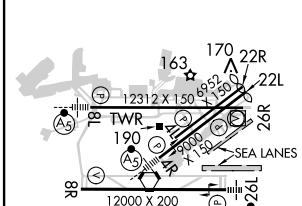
ATIS 127.9 251.15	HCF APPROACH 118.3 269.0	HONOLULU TOWER 118.1 257.8	GND CON 121.9 348.6	CLNC DEL 121.4 281.4
-----------------------------	------------------------------------	--------------------------------------	-------------------------------	--------------------------------



PAC, 29 MAY 2014 to 24 JUL 2014

PAC, 29 MAY 2014 to 24 JUL 2014

ELEV 13	D	TDZE 10
SEALANES: 8W-26W 5000 X 300 4W-22W 3000 X 150		



3000 HNL R-171	ALANA HNL 13.9	Use I-EPC DME when on localizer course.	HEFTL I-EPC 5.4	SECIL I-EPC 10.5	3000
I-EPC 2.2	I-EPC 2.8				Procedure Turn NA
1.7 NM	0.6	2.6 NM	5.1 NM		

MIRL Rwy 4L-22R
REIL Rws 4L, 8R, 22L, 22R and 26R
HIRL Rws 4R-22L, 8L-26R and 8R-26L

CATEGORY	A	B	C	D	E
S-26L	560-2 550 (600-2)				
CIRCLING	620-2 607 (700-2)		760-2½ 747 (800-2½)		1500-3 1487 (1500-3)