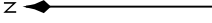


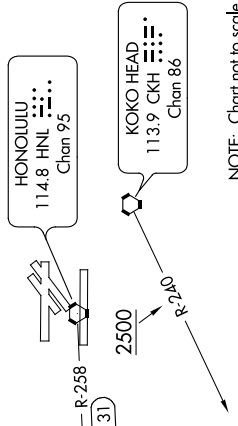
KEOLA TWO DEPARTURE

ATIS
127.9 251.15
CLNC DEL
121.4 281.4
GND CON
121.9 348.6
HONOLULU TOWER
118.1 257.8
HCF APPROACH
118.3 269.0



NOTE: Honolulu departures from Rwy's 4L/R and 8L/R must complete right turn to assigned heading within 2 NM of departure end of runway (HNL 3.6 DME). Cross CKH R-240 at or above 2500'.

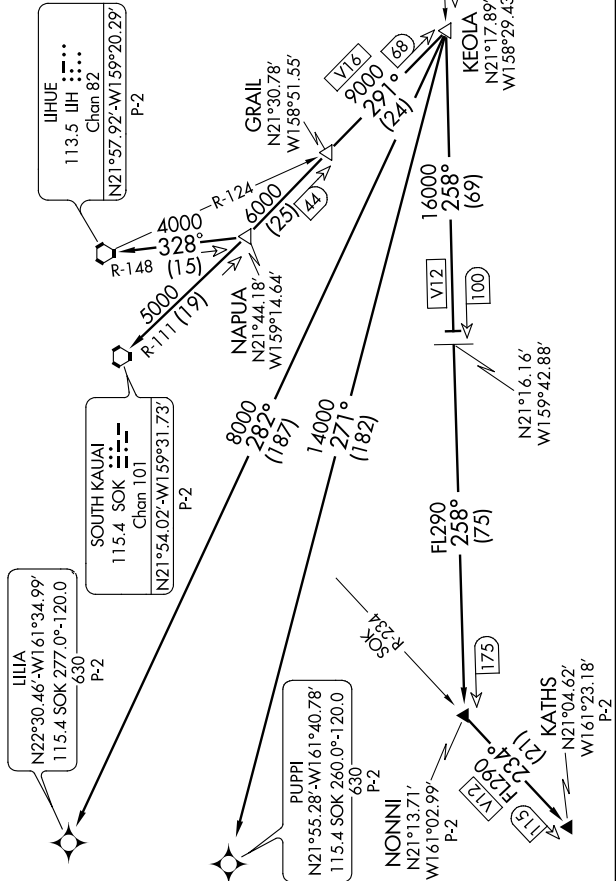
NOTE: Honolulu departures from Rwy's 26L/R left turn to assigned heading must be completed within 2 NM of departure end of runway (HNL 3 DME).



NOTE: Chart not to scale.

DEPARTURE ROUTE DESCRIPTION

Turn right/left to heading assigned by the Tower, expect vectors to KEOLA INT, maintain 5000'; then via transitions. Expect clearance to enroute altitude/flight level at KEOLA INT.
 KATHS TRANSITION (KEOLA2.KATHS): Via HNL R-258 and SOK R-234 to KATHS INT.
 LIHUE TRANSITION (KEOLA2.LIH): Via SOK R-111 and LIH R-148 to LIH VORTAC.
 LIIA TRANSITION (KEOLA2.LIIA): Via RNAV course 282° to LIIA WP.
 NONNI TRANSITION (KEOLA2.NONNI): Via HNL R-258 to NONNI INT.
 PUPPI TRANSITION (KEOLA2.PUPPI): Via RNAV course 271° to PUPPI WP.
 SOUTH KAUI TRANSITION (KEOLA2.SOK): Via SOK R-111 to SOK VORTAC.



KEOLA TWO DEPARTURE