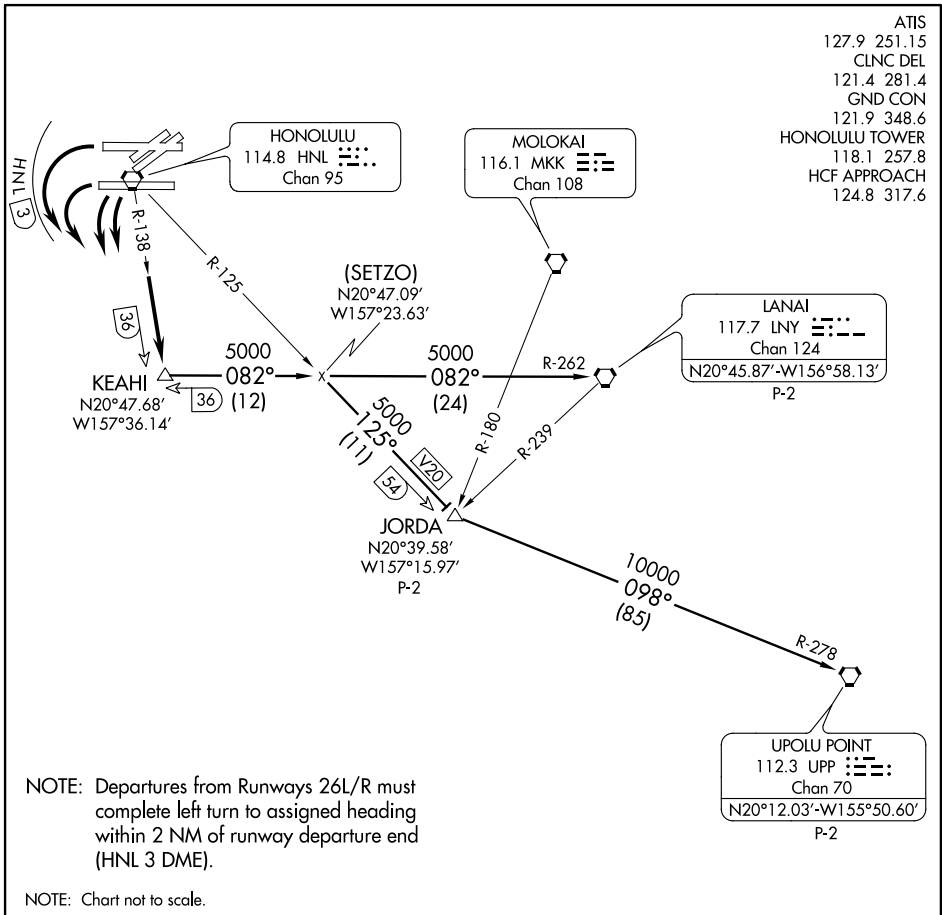


KEAHI THREE DEPARTURE



ATIS
 127.9 251.15
 CLNC DEL
 121.4 281.4
 GND CON
 121.9 348.6
 HONOLULU TOWER
 118.1 257.8
 HCF APPROACH
 124.8 317.6

PAC, 29 MAY 2014 to 24 JUL 2014

PAC, 29 MAY 2014 to 24 JUL 2014

NOTE: Departures from Runways 26L/R must complete left turn to assigned heading within 2 NM of runway departure end (HNL 3 DME).

NOTE: Chart not to scale.

DEPARTURE ROUTE DESCRIPTION

TAKEOFF RUNWAYS 22/26 ONLY: Turn left to heading assigned by tower, expect RADAR vectors to intercept HNL R-138; then via HNL R-138 to KEAHI INT, maintain 5000'; then via (transition). Expect clearance to enroute altitude/flight level at JORDA INT or LNY VORTAC.

JORDA TRANSITION (KEAH3.JORDA): From over KEAHI INT via LNY R-262 and HNL R-125 to JORDA INT.

LANAI TRANSITION (KEAH3.LNY): From over KEAHI INT via LNY R-262 to LNY VORTAC.

UPOLU TRANSITION (KEAH3.UPP): From over KEAHI INT via LNY R-262 and HNL R-125 to JORDA INT, thence via UPP R-278 to UPP VORTAC.