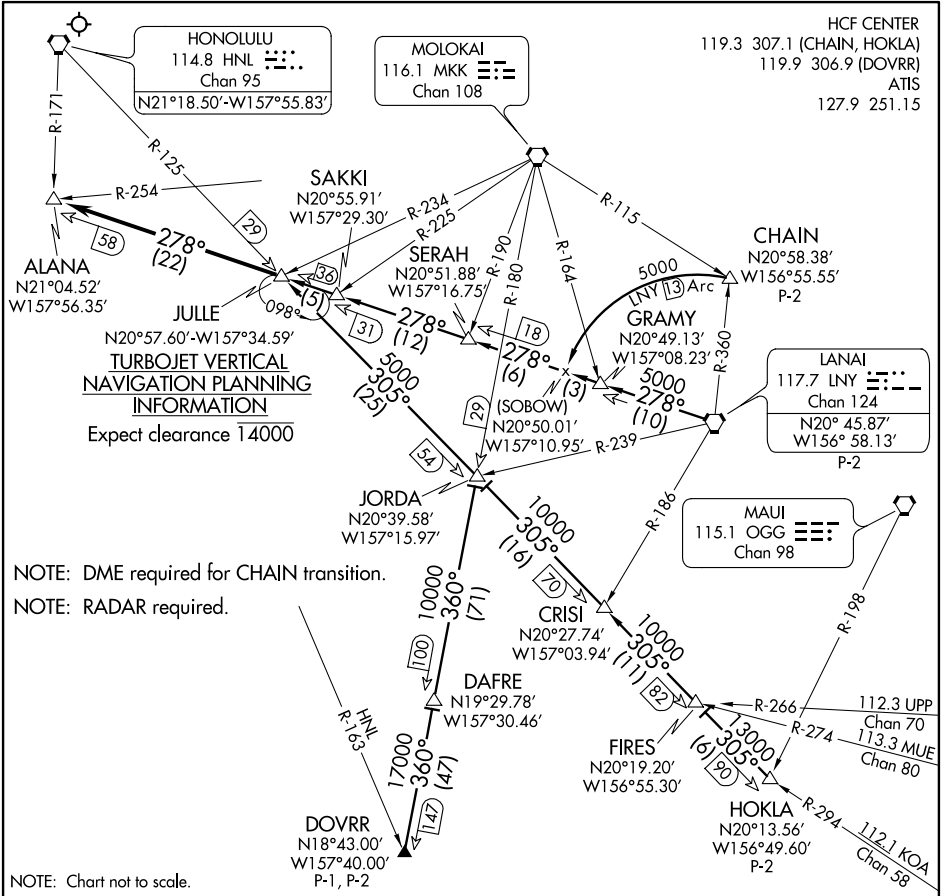


JULLE FIVE ARRIVAL



PAC, 29 MAY 2014 to 24 JUL 2014

PAC, 29 MAY 2014 to 24 JUL 2014

ARRIVAL ROUTE DESCRIPTION

CHAIN TRANSITION (CHAIN.JULLE5): From over CHAIN INT on LNY 13 DME CCW arc to SOBOW then via LNY R-278 to JULLE INT. Thence. . .

DOVRR TRANSITION (DOVRR.JULLE5): From over DOVRR INT via MKK R-180 to JORDA INT then via HNL R-125 to JULLE INT. Thence. . .

HOKLA TRANSITION (HOKLA.JULLE5): From over HOKLA INT via HNL R-125 and KOA R-294 on HNL R-125 to JULLE INT. Thence. . .

LANAI TRANSITION (LNY.JULLE5): From over LANAI VORTAC via LNY R-278 to JULLE INT. Thence. . .

. . . From over JULLE INT on LNY R-278 to ALANA INT. Expect vectors to final approach course.

LOST COMMUNICATIONS: At ALANA INT proceed with the VOR or TACAN RWY 4R approach.