

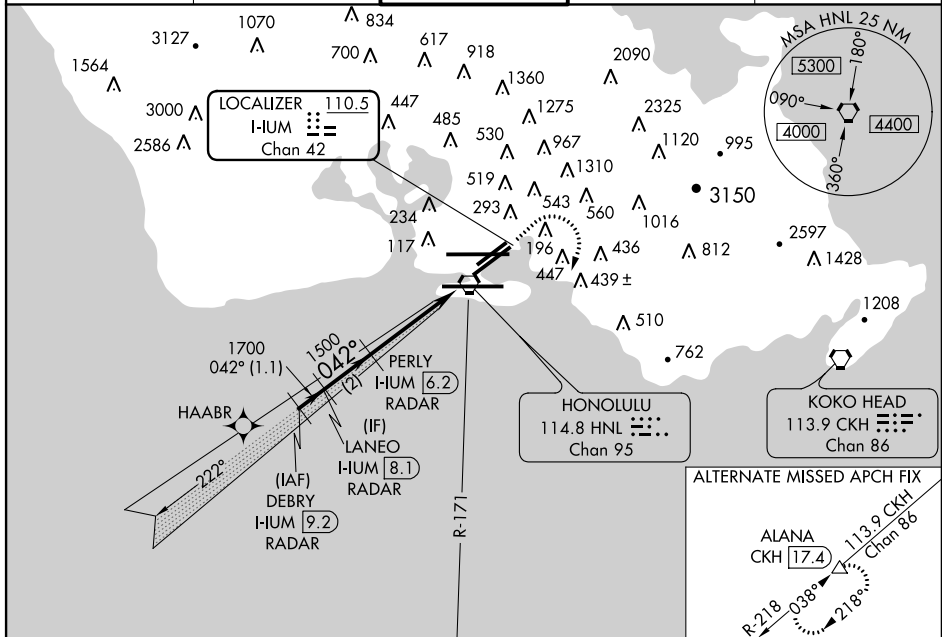
LOC/DME HUM 110.5 Chan 42	APP CRS 042°	Rwy Idg 8950 TDZE 9 Apt Elev 13
---	------------------------	--

ILS Z RWY 4R

HONOLULU INTL (HNL) (PHNL)

<p>▼ For inoperative MALSR, increase S-ILS 4R Cats A, B, C, D visibility to 3/8 mile; and increase Cat E visibility to 1/8 mile. DME or RADAR required. *Missed approach requires a minimum climb of 335 feet per NM to 2000.</p>	<p>MALSR</p> <p>MISSED APPROACH: Climb to 480, Cat E climb to 760 then climbing right turn to 3000 on heading 220° and HNL VORTAC R-171 to ALANA INT/HNL 13.9 DME and hold.</p>
--	---

ATIS 127.9 251.15	HCF APPROACH 118.3 269.0	HONOLULU TOWER 118.1 257.8	GND CON 121.9 348.6	CLNC DEL 121.4 281.4
-----------------------------	------------------------------------	--------------------------------------	-------------------------------	--------------------------------

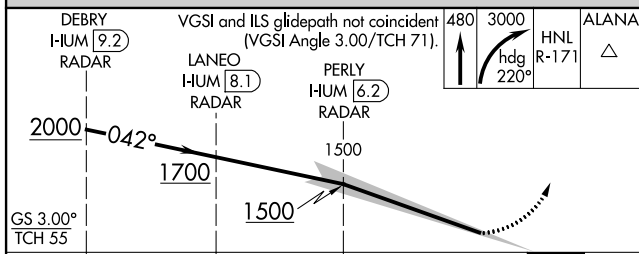


PAC, 29 MAY 2014 to 24 JUL 2014

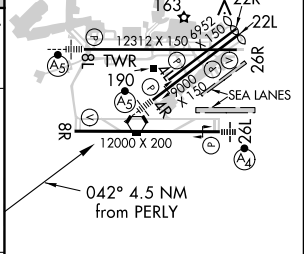
PAC, 29 MAY 2014 to 24 JUL 2014

ELEV 13	D	TDZE 9
----------------	----------	---------------

SEALANES:
8W-26W 5000 X 300
4W-22W 3000 X 150



CATEGORY	A	B	C	D	E
S-ILS 4R		*209-1/2	200 (200-1/2)		NA
S-ILS 4R		281-1/2	272 (300-1/2)		556-1 3/8 547 (600-1 3/8)



MIRL Rwy 4L-22R
REIL Rwsy 4L, 8R, 22L, 22R and 26R
HIRL Rwsy 4R-22L, 8L-26R and 8R-26L