


LOC/DME HUM 110.5 Chan 42	APP CRS 042°	Rwy Idg 8950 TDZE 9 Apt Elev 13
---	------------------------	--

ILS Y RWY 4R

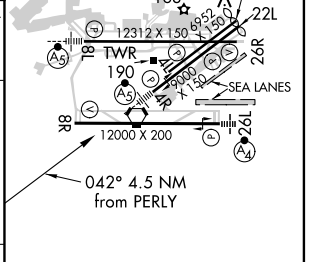
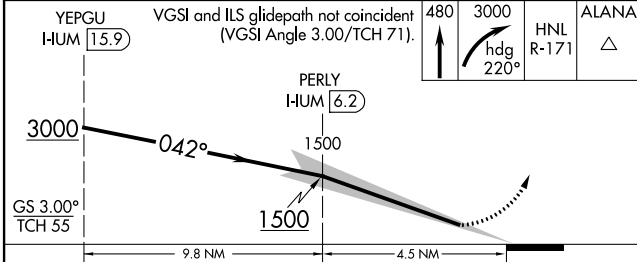
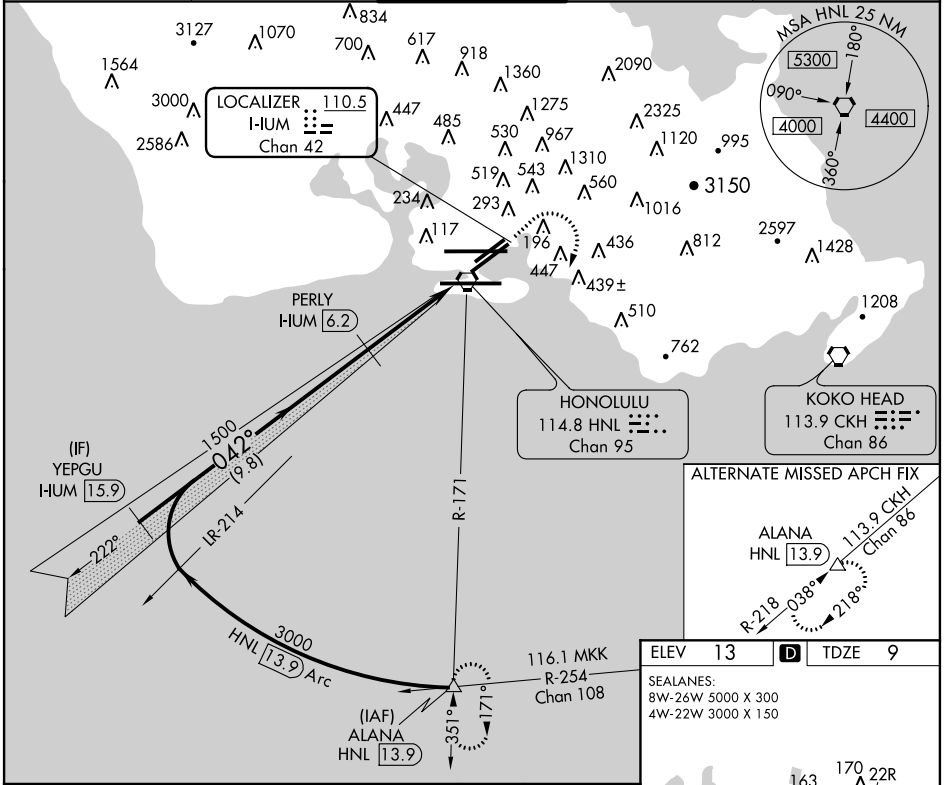
HONOLULU INTL (HNL) (PHNL)

▼ For inoperative MALSR, increase S-ILS 4R Cat A, B, C, D visibility to 3/8 mile, and increase Cat E visibility to 1/8 mile. DME or RADAR required. *Missed approach requires a minimum climb of 335 feet per NM to 2000.

MALSR 

MISSED APPROACH: Climb to 480, Cat E climb to 760, then climbing right turn to 3000 on heading 220° and HNL VORTAC R-171 to ALANA INT/HNL 13.9 DME and hold.

ATIS 127.9 251.15	HCF APPROACH 118.3 269.0	HONOLULU TOWER 118.1 257.8	GND CON 121.9 348.6	CLNC DEL 121.4 281.4
-----------------------------	------------------------------------	--------------------------------------	-------------------------------	--------------------------------



CATEGORY	A	B	C	D	E
S-ILS 4R		*209-1/2	200 (200-1/2)		NA
S-ILS 4R		281-1/2	272 (300-1/2)		556-1 3/8 547 (600-1 3/8)

MIRL Rwy 4L-22R
REIL Rwys 4L, 8R, 22L, 22R and 26R
HIRL Rwys 4R-22L, 8L-26R and 8R-26L

PAC, 29 MAY 2014 to 24 JUL 2014

PAC, 29 MAY 2014 to 24 JUL 2014