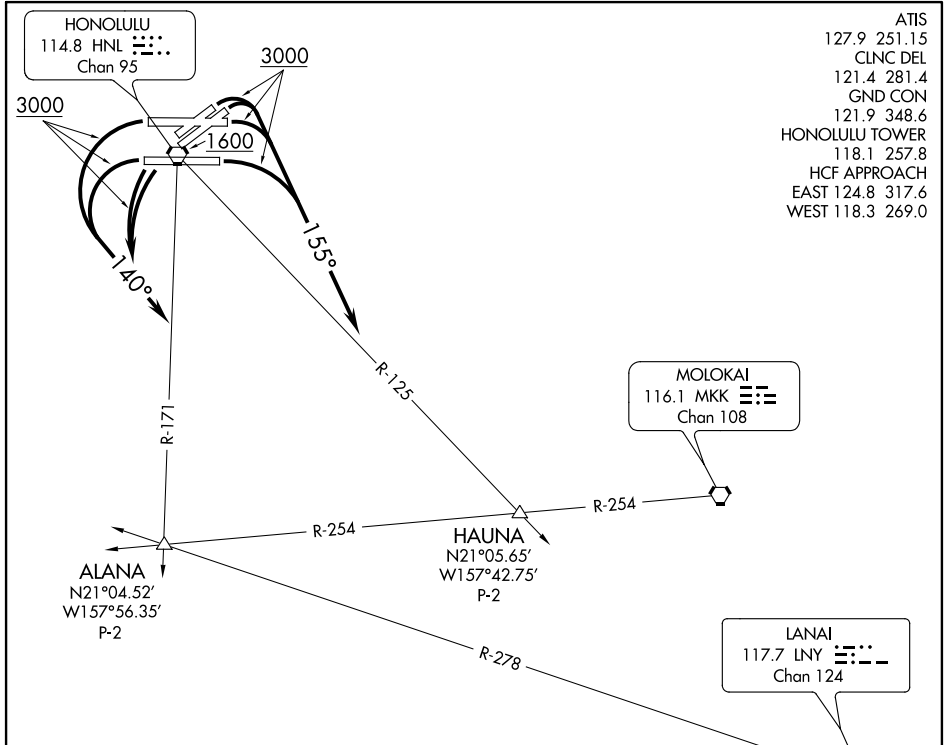


# HONOLULU ONE DEPARTURE (OBSTACLE)



PAC, 29 MAY 2014 to 24 JUL 2014

PAC, 29 MAY 2014 to 24 JUL 2014

### TAKEOFF MINIMUMS

Rwys 22L/R, 26R: Standard.

Rwys 4L/R: Standard with minimum climb of 425 feet per NM to 1900, do not exceed 180 KIAS until southeast bound on 155° heading, or 1700-2½ for climb in visual conditions.

Rwy 8L: Standard with minimum climb of 310 feet per NM to 1000, or 1700-2½ for climb in visual conditions.

Rwy 8R: Standard with minimum climb of 270 feet per NM to 1000, or 1700-2½ for climb in visual conditions.

Rwy 26L: Standard with minimum climb of 237 feet per NM to 300, or 1700-2½ for climb in visual conditions.

(NOTES CONTINUED ON FOLLOWING PAGE)

NOTE: Chart not to scale.



### DEPARTURE ROUTE DESCRIPTION

TAKEOFF RUNWAYS 4L/R, 8L/R: Climbing right turn to 3000 via heading 155° to intercept HNL R-125 to HAUNA INT before proceeding on course, or. . .

TAKEOFF RUNWAYS 22L/R, 26L/R: Climbing left turn to 3000 via heading 140° to intercept HNL R-171 to ALANA INT before proceeding on course, or. . .

. . . For climb in visual conditions to cross HNL VORTAC southbound at 1600, continue climb to 3000 via HNL R-171 to ALANA INT before proceeding on course.