

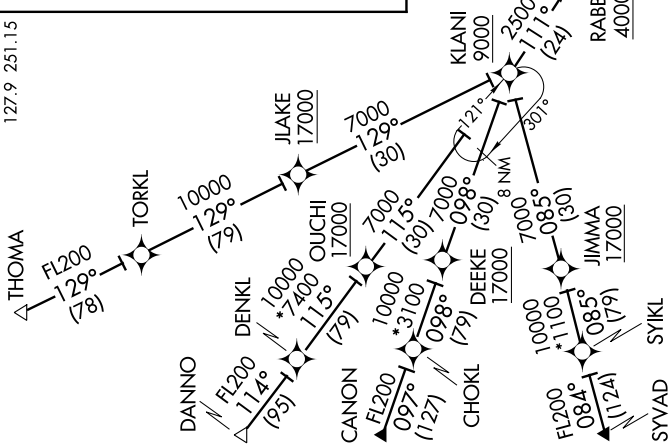
HAABR ONE ARRIVAL (RNAV)

ST-754 (FAA)

HONOLULU INTL (HNL) (PHNL)
HONOLULU, HAWAII

PAC, 29 MAY 2014 to 24 JUL 2014

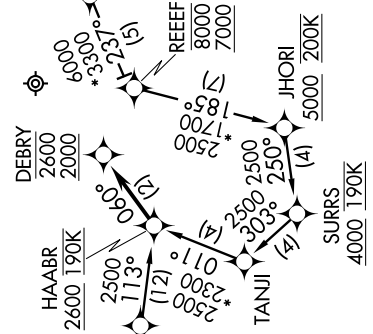
HCF CENTER
 127.6 291.6 (APACK, BITTA, CLUTS, ZIGIE)
 126.6 284.6 (DENNS)
 119.9 306.9 (CANON, DANNO, SYVAD, THOMA)
 ATIS
 127.9 251.15



- ARRIVAL ROUTE DESCRIPTION**
- APACK TRANSITION (APACK.HAABR1)
 - BITTA TRANSITION (BITTA.HAABR1)
 - CANON TRANSITION (CANON.HAABR1)
 - CLUTS TRANSITION (CLUTS.HAABR1)
 - DANNO TRANSITION (DANNO.HAABR1)
 - DENNS TRANSITION (DENNS.HAABR1)
 - SYVAD TRANSITION (SYVAD.HAABR1)
 - THOMA TRANSITION (THOMA.HAABR1)
 - ZIGIE TRANSITION (ZIGIE.HAABR1)

From HAABR as depicted to DEBY. Cross DEBY at/above 2000 feet and at/below 2600.

LOST COMMUNICATIONS: Descend via the HAABR Arrival, at DEBY cleared PHNL ILS Z RWY 4R approach.



NOTE: Turbojet aircraft descend via mach number until transition to 280 KIAS. Maintain 280 KIAS until 10000 MSL.

NOTE: Expect PHNL ILS Z RWY 4R approach at DEBY.

NOTE: GPS required.

NOTE: RADAR required.

NOTE: RNAV 1.

NOTE: Chart not to scale.