

ABINGDON, VIRGINIA

AL-5719 (FAA)

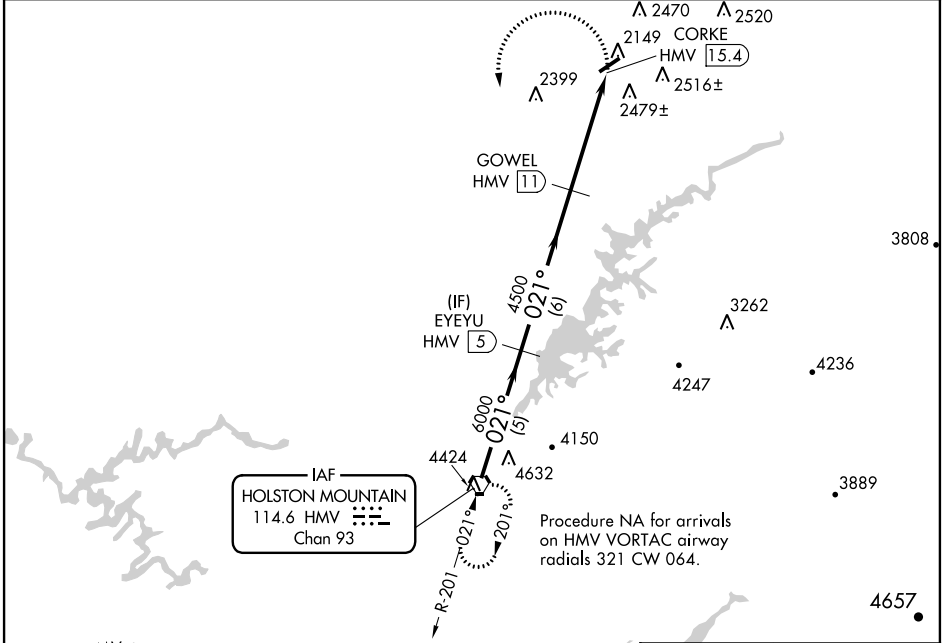
VORTAC HMV 114.6 Chan 93	APP CRS 021°	Rwy ldg TDZE Apt Elev	N/A N/A 2087
--	------------------------	-----------------------------	---

VOR/DME-B
VIRGINIA HIGHLANDS (VJI)

⚠ When local altimeter setting not received; use Tri-Cities Rgnl TN/VA altimeter setting and increase all MDA 140 feet; increase Cat A visibility ¼ mile, Cats C and D visibility ½ mile.

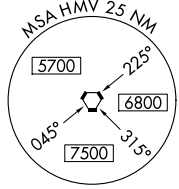
MISSED APPROACH: Climbing left turn to 6000 via heading 165° and HMV R-021 to HMV VORTAC and hold.

AWOS-3 128.125	TRI-CITY APP CON ★ 125.25 349.0	UNICOM 122.8 (CTAF) ①
--------------------------	---	---------------------------------



NE-3, 26 JUN 2014 to 24 JUL 2014

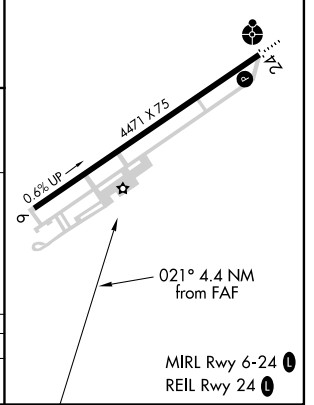
NE-3, 26 JUN 2014 to 24 JUL 2014



IAF
HOLSTON MOUNTAIN
114.6 HMV
Chan 93

ELEV 2087

	HMV VORTAC	EYEYU HMV 5	GOWEL HMV 11	CORKE HMV 15.4
Procedure Turn NA	6000	6000	4500	
	5 NM	6 NM	4.4 NM	
CATEGORY	A	B	C	D
CIRCLING	2860-1 773 (800-1)	2860-1¼ 773 (800-1¼)	2860-2¼ 773 (800-2¼)	2860-2½ 773 (800-2½)



ABINGDON, VIRGINIA
Amdt 6 14149

36°41'N-82°02'W

VIRGINIA HIGHLANDS (VJI)
VOR/DME-B