

WAAS CH 82411 W06A	APP CRS 061°	Rwy Idg 4471 TDZE 2068 Apt Elev 2087
--	------------------------	---

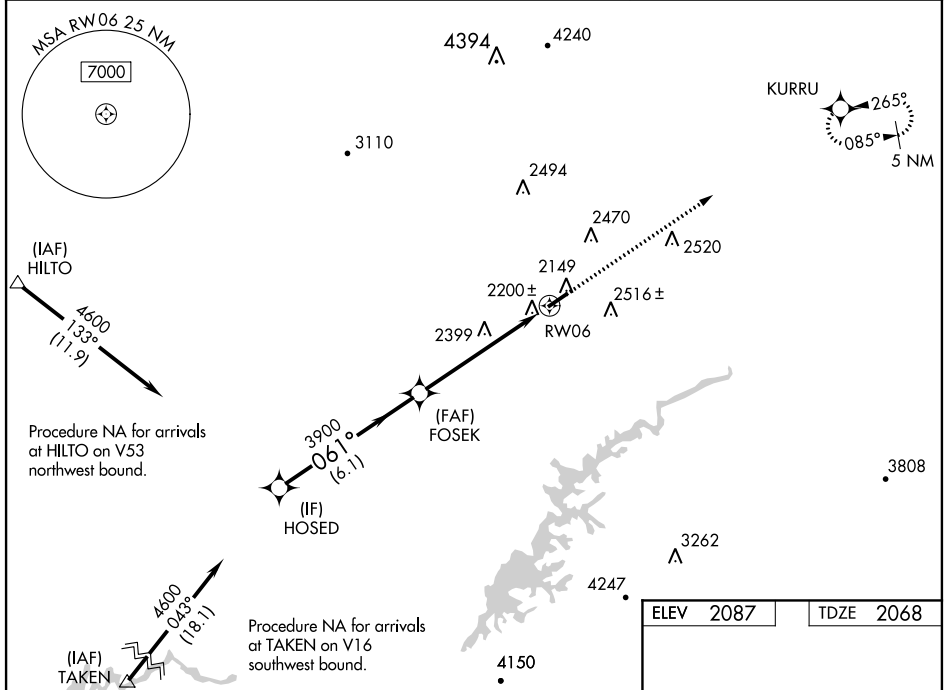
RNAV (GPS) RWY 6

VIRGINIA HIGHLANDS (VJI)

▼ Baro-VNAV NA when using Tri-Cities Rgnl TN/VA altimeter setting. For uncompensated Baro-VNAV systems, LNAV/VNAV NA below -19°C (-2°F) or above 30°C (86°F).
 ▲ DME/DME RNP-0.3 NA. Helicopter visibility reduction below 1 SM NA. When local altimeter setting not received, use Tri-Cities Rgnl TN/VA altimeter setting and increase all DA 131 feet and all MDA 140 feet, and increase LPV and LNAV/VNAV all Cats, and Circling Cats C and D visibility ½ mile, increase LNAV Cat C and D and Circling Cat A and B visibility ¼ mile.

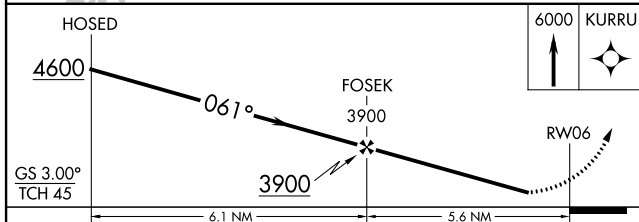
MISSED APPROACH:
 Climb to 6000 direct KURRU and hold, continue climb-in-hold to 6000.

AWOS-3 128.125	TRI-CITY APP CON ★ 125.25 349.0	UNICOM 122.8 (CTAF) 0
--------------------------	---	---------------------------------



NE-3, 26 JUN 2014 to 24 JUL 2014

NE-3, 26 JUN 2014 to 24 JUL 2014



CATEGORY	A	B	C	D
LPV DA	2443-1¼		375 (400-1¼)	
LNAV/VNAV DA	2386-1		318 (300-1)	
LNAV MDA	2660-1	592 (600-1)	2660-1¾	592 (600-1¾)
CIRCLING	2860-1	773 (800-1)	2860-2¼ 773 (800-2¼)	2860-2½ 773 (800-2½)

