


WAAS CH <b>77827</b> <b>W24A</b>	APP CRS <b>241°</b>	Rwy Idg TDZE Apt Elev	<b>4471</b> <b>2087</b> <b>2087</b>
--	------------------------	-----------------------------	---

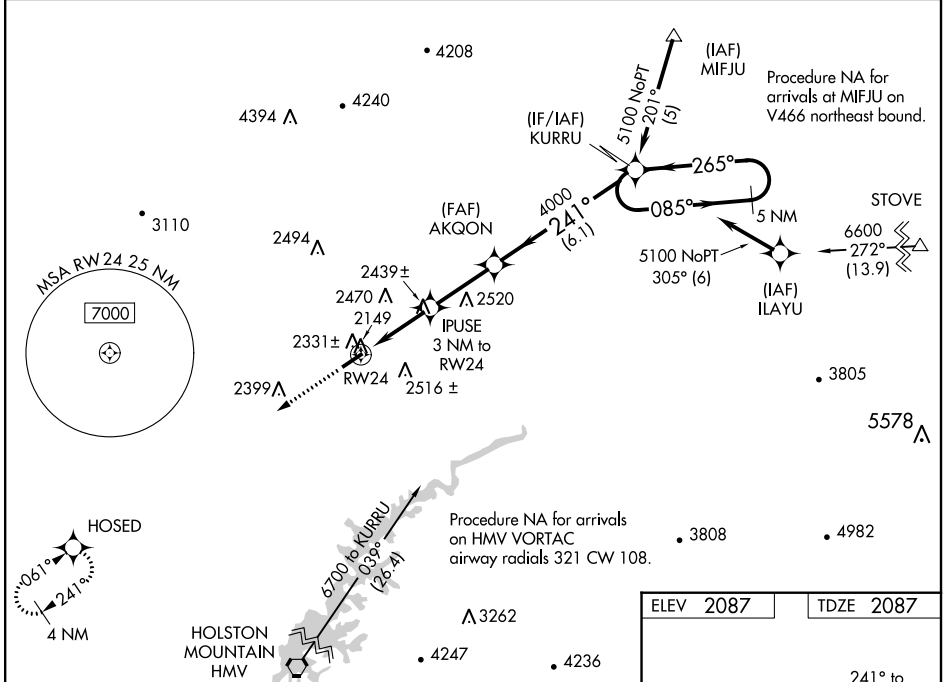
# RNAV (GPS) RWY 24

VIRGINIA HIGHLANDS (VJI)

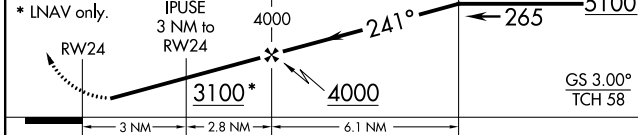
**⚠** Inop table does not apply. For uncompensated Baro-VNAV systems, LNAV/VNAV NA below -19°C (-2°F) or above 30°C (86°F). DME/DME RNP-0.3 NA. Helicopter visibility reduction below 1 SM NA. When local altimeter setting not received, use Tri-Cities Rgnl TN/VA altimeter setting and increase all MDA 140 feet and all DA 131 feet; increase LNAV Cat B, Circling Cat A and B, and LPV all Cats visibility ¼ mile, increase LNAV and Circling Cat C and D visibility ⅓ mile, and LNAV/VNAV all Cats visibility ⅓ mile. Baro-VNAV NA when using Tri-Cities Rgnl TN/VA altimeter setting.

**ODALS**  
 MISSED APPROACH: Climb to 5700 direct HOSED and hold, continue climb-in-hold 5700.

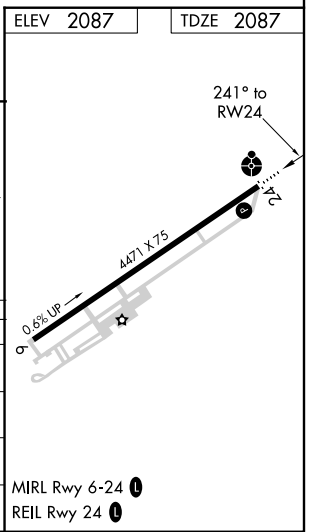
AWOS-3 <b>128.125</b>	TRI-CITY APP CON ★ <b>125.25 349.0</b>	UNICOM <b>122.8 (CTAF)</b> 
--------------------------	---	---



**5700 HOSED** VGSI and RNAV glidepath not coincident (VGSI Angle 4.00/TCH 32). **5 NM** Holding Pattern **KURRU**



CATEGORY	A	B	C	D
LPV DA	2472-1¼		385 (400-1¼)	
LNAV/VNAV DA	2512-1¾		425 (500-1¾)	
LNAV MDA	2700-1	613 (700-1)	2700-1¾	613 (700-1¾)
CIRCLING	2860-1	773 (800-1)	2860-2¼	2860-2½
			773 (800-2¼)	773 (800-2½)



NE-3, 26 JUN 2014 to 24 JUL 2014

NE-3, 26 JUN 2014 to 24 JUL 2014