

LOC/DME I-VJI 108.3 Chan 20	APP CRS 241°	Rwy Idg TDZE Apt Elev	4471 2087 2087
--	------------------------	-----------------------------	---

LOC RWY 24

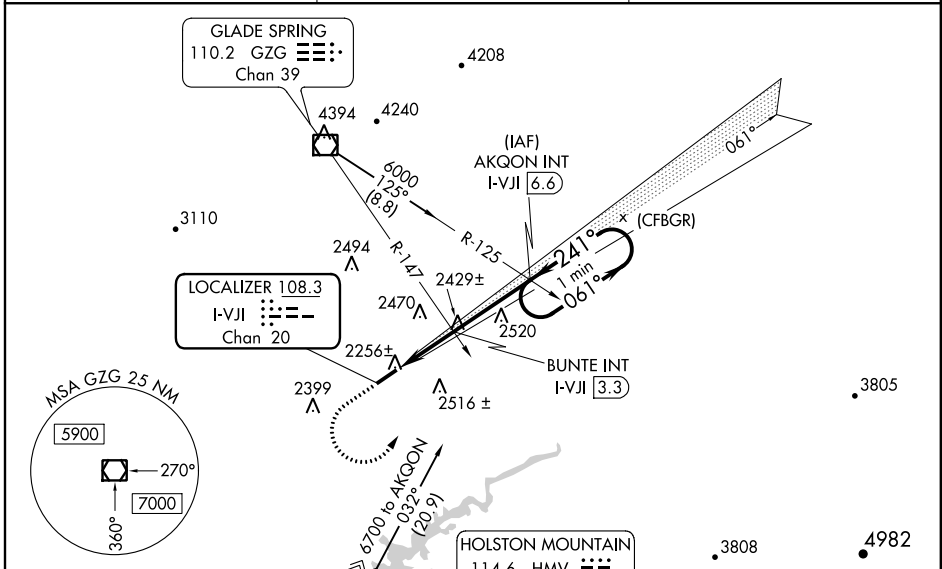
VIRGINIA HIGHLANDS (VJI)

⚠ Inop table does not apply. Helicopter visibility reduction below 1 SM NA. When local altimeter setting not received; use Tri-Cities Rgnl TN/VA altimeter setting and increase all MDA 140 feet; increase S-24 Cat A and B and Circling Cat A and D visibility ¼ mile, and S-24 Cat C and D and Circling Cat C visibility ½ mile. BUNTE Fix minimums increase Circling Cat A and B visibility ¼ mile, and S-24 Cat C and Circling Cat C and D visibility ½ mile. Cat D Straight-in minima NA when using Tri-Cities Rgnl TN/VA altimeter setting.

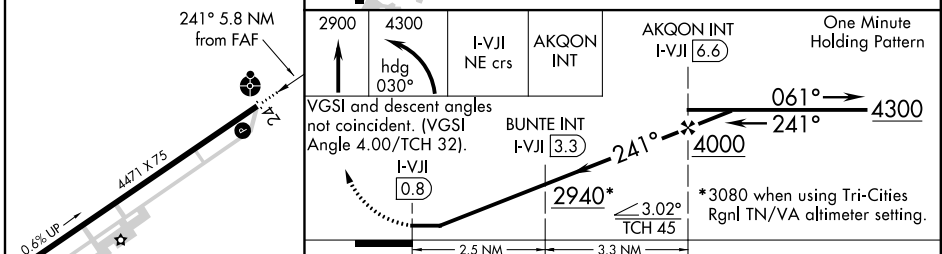
ODALS

MISSED APPROACH: Climb to 2900 then climbing left turn to 4300 on heading 030° and I-VJI localizer NE course to AKQON INT/I-VJI 6.6 DME and hold.

AWOS-3 128.125	TRI-CITY APP CON ★ 125.25 349.0	UNICOM 122.8(CTAF) 0
--------------------------	---	--------------------------------



ELEV 2087	TDZE 2087
-----------	-----------



CATEGORY	A	B	C	D
S-24	2940-1 853 (900-1)	2940-1¼ 853 (900-1¼)	2940-2½	853 (900-2½)
CIRCLING	2940-1¼	853 (900-1¼)	2940-2½	2940-2¾ 853 (900-2¾)
BUNTE FIX MINIMUMS				
S-24	2520-1	433 (500-1)	2520-1¼	433 (500-1¼)
CIRCLING	2860-1	773 (800-1)	2860-2¼	2860-2½ 773 (800-2½)

NE-3, 26 JUN 2014 to 24 JUL 2014

NE-3, 26 JUN 2014 to 24 JUL 2014