

VISTA TWO ARRIVAL

ST-237 (FAA)

LOS ANGELES INTL
LOS ANGELES, CALIFORNIA

SW-3, 26 JUN 2014 to 24 JUL 2014

SOCAL APP CON
128.1 281.4
ATIS
133.8

SEAL BEACH
115.7 SU
Chan 104
N33°47.00'-W118°03.29'

TOZEK
N33°42.21'
W118°01.53'

MADOW
N33°37.42'-W117°59.78'
TURBOJET VERTICAL
NAVIGATION
Expect to cross at 7000'

BAYER
N33°27.83'-W117°56.30'
TURBOJET VERTICAL
NAVIGATION
Expect to cross at 10000'

CWARD
N33°23.04'
W117°54.56'

SHIVE
N33°15.97'
W117°52.00'

OCEANSIDE
115.3 OCN
Chan 100
N33°14.44'-W117°25.06'

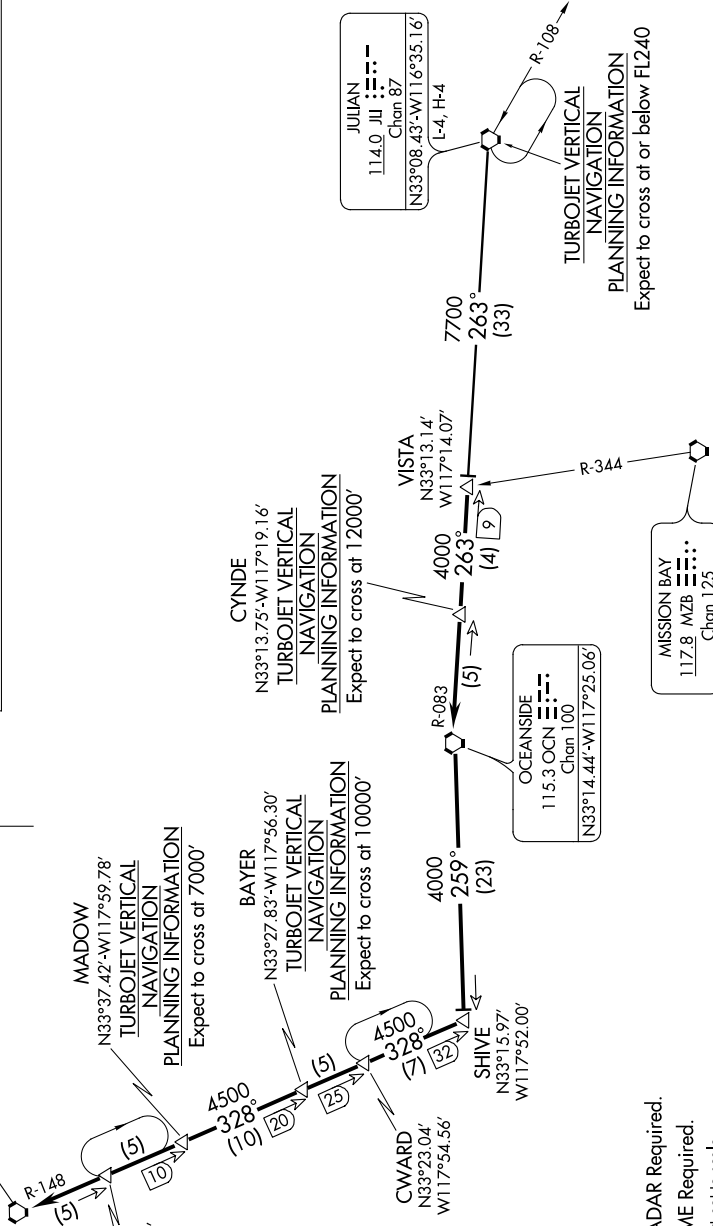
CYNDE
N33°13.75'-W117°19.16'
TURBOJET VERTICAL
NAVIGATION
Expect to cross at 12000'

VISTA
N33°13.14'
W117°14.07'

JULIAN
114.0 JU
Chan 87
N33°08.43'-W116°35.16'

MISSION BAY
117.8 MZB
Chan 125

TURBOJET VERTICAL
NAVIGATION
PLANNING INFORMATION
Expect to cross at or below FL240



NOTE: RADAR Required.
NOTE: DME Required.
NOTE: Chart not to scale.

VISTA TWO ARRIVAL

(VISTA.VISTA2) 11125

LOS ANGELES, CALIFORNIA
LOS ANGELES INTL

SW-3, 26 JUN 2014 to 24 JUL 2014