

(SHIVE.SHIVE1) 11125

# SHIVE ONE ARRIVAL

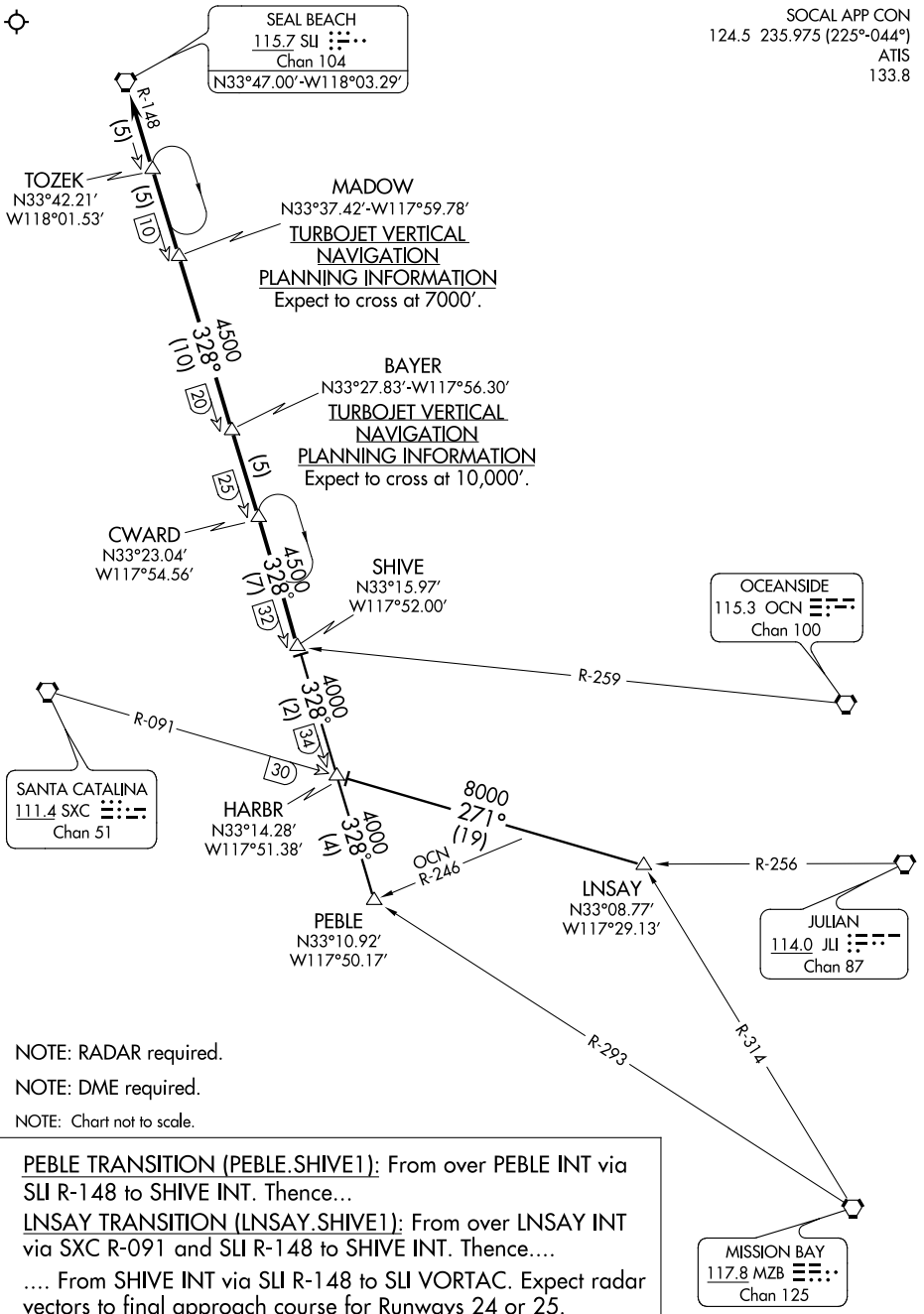
ST-237 (FAA)

LOS ANGELES INTL  
LOS ANGELES, CALIFORNIA

SOCAL APP CON  
124.5 235.975 (225°-044°)  
ATIS  
133.8

SW-3, 26 JUN 2014 to 24 JUL 2014

SW-3, 26 JUN 2014 to 24 JUL 2014



NOTE: RADAR required.  
NOTE: DME required.  
NOTE: Chart not to scale.

PEBLE TRANSITION (PEBLE.SHIVE1): From over PEBLE INT via SLI R-148 to SHIVE INT. Thence...

LNSAY TRANSITION (LNSAY.SHIVE1): From over LNSAY INT via SXC R-091 and SLI R-148 to SHIVE INT. Thence....

.... From SHIVE INT via SLI R-148 to SLI VORTAC. Expect radar vectors to final approach course for Runways 24 or 25.

# SHIVE ONE ARRIVAL

(SHIVE.SHIVE1) 11125

LOS ANGELES, CALIFORNIA  
LOS ANGELES INTL