


WAAS CH 69603 W07B	APP CRS 069°	Rwy Idg 11095 TDZE 125 Apt Elev 126
--	------------------------	--

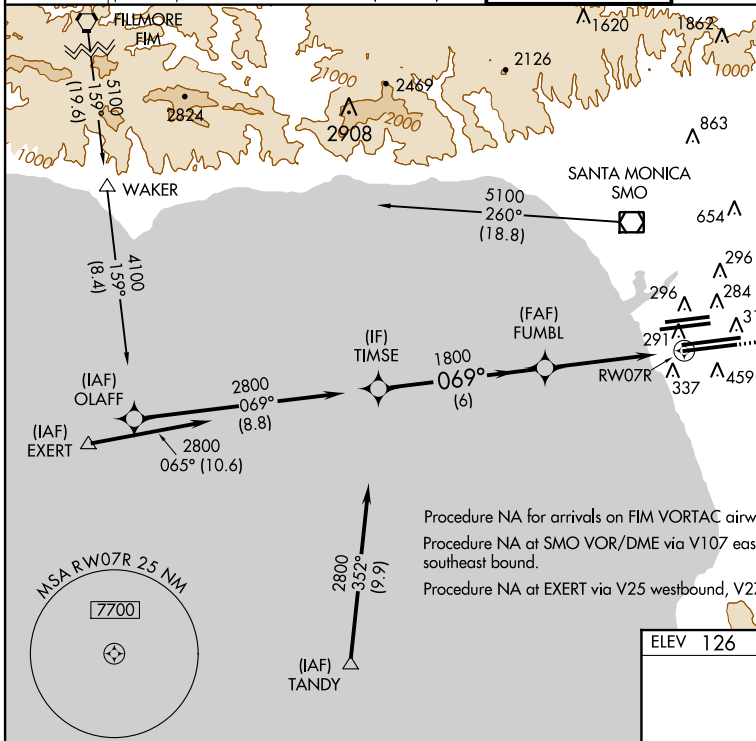
RNAV (GPS) Y RWY 7R


LOS ANGELES INTL (LAX)

▼ For inoperative MALSR, increase LPV all Cats visibility to RVR 5000. For uncompensated Baro-VNAV systems, LNAV/VNAV NA below -15°C (5°F) or above 48°C (118°F).
W DME/DME RNP-0.3 NA. Simultaneous approach authorized with Rwy 6L/R. LNAV procedure NA during simultaneous operations. Use of FD or AP providing RNAV track guidance required during simultaneous operations.

MALSR

MISSED APPROACH:
 Climb to 3000 direct ESINE and via 069° track to DOWNE and hold.

ATIS ARR 133.8 DEP 135.65	124.3 363.2 (APCH FM WEST) 124.5 235.975 (225°-044°)	SOCAL APP CON 124.9 269.0 (090°-224°) 128.5 360.7 (045°-089°)	LOS ANGELES TOWER N 133.9 239.3 S 120.95 379.1	GND CON N 121.65 327.0 S 121.75 327.0	CLNC DEL 121.4 327.0
---	---	---	--	---	--------------------------------



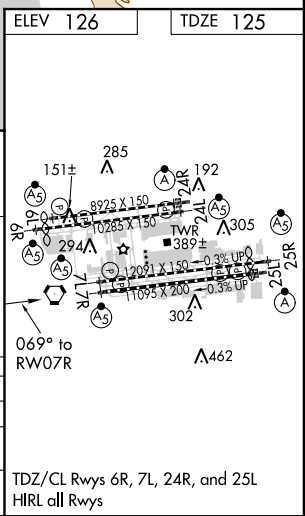
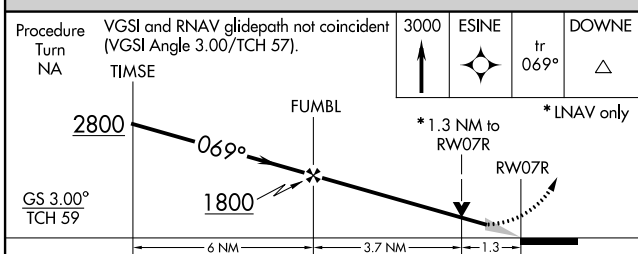
MISSED APCH FIX
 DOWNE

 248°
 068°
 5 NM
 1173 A

SW-3, 26 JUN 2014 to 24 JUL 2014

SW-3, 26 JUN 2014 to 24 JUL 2014

Procedure NA for arrivals on FIM VORTAC airway radials 148 CW 195.
 Procedure NA at SMO VOR/DME via V107 eastbound, T245 and T247 southeast bound.
 Procedure NA at EXERT via V25 westbound, V27 northwest bound.

ELEV 126	TDZE 125
----------	----------



CATEGORY	A	B	C	D
LPV DA		417/24	292 (300-½)	
LNAV/VNAV DA		582/50	457 (500-1)	
LNAV MDA	600/24	475 (500-½)	600/40 475 (500-¾)	600/50 475 (500-1)