

WAAS CH 42504 W07A	APP CRS 069°	Rwy Idg 12091 TDZE 126 Apt Elev 126
--	------------------------	--

RNAV (GPS) Y RWY 7L

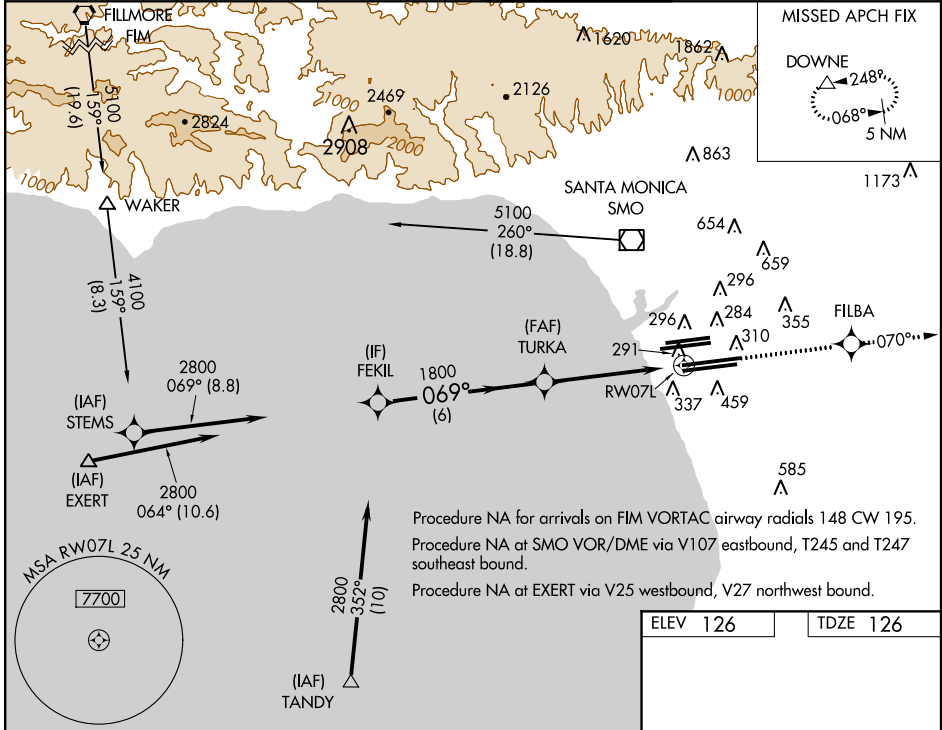
LOS ANGELES INTL (LAX)

▼ For inoperative MALSR, increase LPV all Cats visibility to RVR 5000. For uncompensated Baro-VNAV systems, LNAV/VNAV NA below -15°C (5°F) or above 48°C (118°F). DME/DME RNP -0.3 NA. Simultaneous approach authorized with Rwy 6L/6R. LNAV procedure NA during simultaneous operations. Use of FD or AP providing RNAV track guidance required during simultaneous operations.



MISSED APPROACH:
Climb to 3000 direct
FILBA then via 070° track to
DOWNE and hold.

ATIS ARR 133.8 DEP 135.65	124.3 363.2 (APCH FM WEST) 124.5 235.975 (225°-044°)	SOCAL APP CON	124.9 269.0 (090°-224°) 128.5 360.7 (045°-089°)	LOS ANGELES TOWER N 133.9 239.3 S 120.95 379.1	GND CON N 121.65 327.0 S 121.75 327.0	CLNC DEL 121.4 327.0
---	---	---------------	--	--	---	--------------------------------



SW-3, 26 JUN 2014 to 24 JUL 2014

SW-3, 26 JUN 2014 to 24 JUL 2014

VGSi and RNAV glidepath not coincident (VGSi Angle 3.00/TCH 83).		3000	FILBA	tr 070°	DOWNE
Procedure Turn NA	2800				
GS 3.00° TCH 59	1800				
CATEGORY	A	B	C	D	
LPV DA	432/24		306 (400-½)		
LNAV/VNAV DA	582/50		456 (500-1)		
LNAV MDA	600/24	474 (500-½)	600/40 474 (500-¾)	600/50 474 (500-1)	

