

WAAS CH 61207 W06B	APP CRS 069°	Rwy Idg TDZE 114 Apt Elev 126	9954
--	------------------------	---	-------------

RNAV (GPS) Y RWY 6R

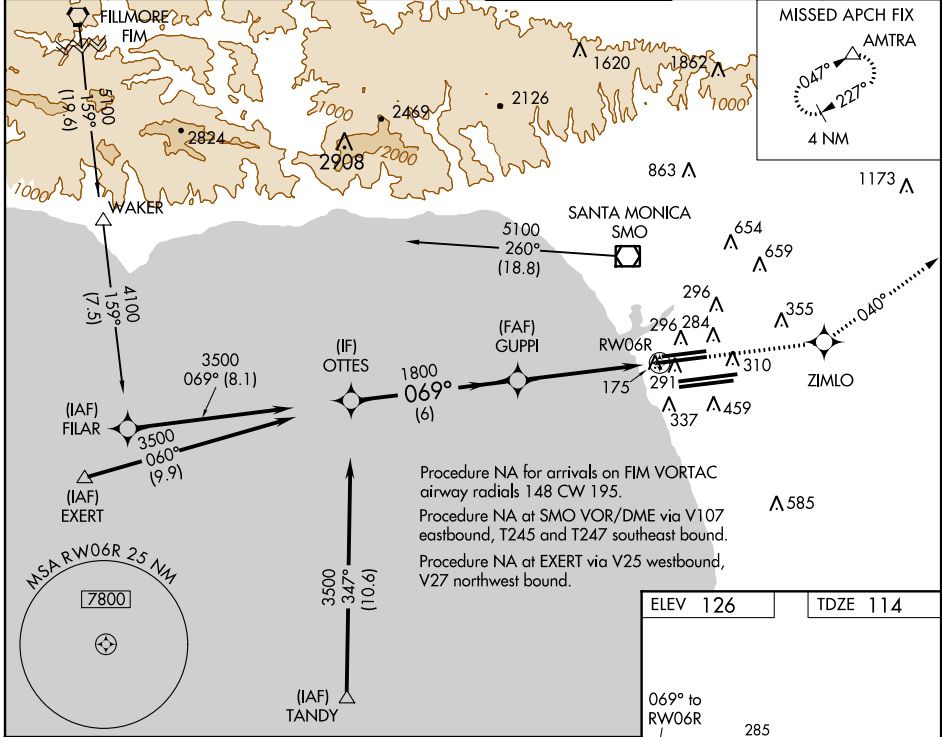
LOS ANGELES INTL (LAX)

W For inoperative MALS/R, increase LPV all Cats and LNAV/VNAV Cat D visibility to RVR 5000, and increase LNAV Cat D visibility to RVR 6000. For uncompensated Baro-VNAV systems, LNAV/VNAV NA below -15°C (5°F) or above 48°C (118°F). DME/DME RNP-0.3 NA. Simultaneous approach authorized with Rwy 7L/R. LNAV procedure NA during simultaneous operations. Use of FD or AP providing RNAV track guidance required during simultaneous operations.

MALS/R
AS

MISSED APPROACH:
Climb to 3000 direct ZIMLO and via 040° track to AMTRA and hold.

ATIS ARR 133.8 DEP 135.65	124.3 363.2 (APCH FM WEST) 124.5 235.975 (225°-044°)	SOCAL APP CON 124.9 269.0 (090°-224°) 128.5 360.7 (045°-089°)	LOS ANGELES TOWER N 133.9 239.3 S 120.95 379.1	GND CON N 121.65 327.0 S 121.75 327.0	CLNC DEL 121.4 327.0
---	---	---	---	--	---------------------------------------



SW-3, 26 JUN 2014 to 24 JUL 2014

SW-3, 26 JUN 2014 to 24 JUL 2014

Procedure VGSi and RNAV glidepath not coincident (VGSi Angle 3.00/TCH 78).
Turn NA OTTES

3000	ZIMLO	tr 040°	AMTRA
------	-------	---------	-------

GS 3.00° TCH 43

CATEGORY	A	B	C	D
LPV DA	364/24		250 (300-½)	
LNAV/VNAV DA	425/24		311 (300-½)	
LNAV MDA	520/24		406 (400-½)	
			520/40	
			406 (400-¾)	
			520/50	
			406 (400-1)	

TDZ/CL Rwy 6R, 7L, 24R, and 25L
HIRL all Rwy's

