


WAAS CH <b>53507</b> W25A	APP CRS <b>249°</b>	Rwy Idg <b>11095</b> THRE <b>98</b> Apt Elev <b>126</b>
---------------------------------	------------------------	---

# RNAV (GPS) Y RWY 25L

LOS ANGELES INTL (LAX)

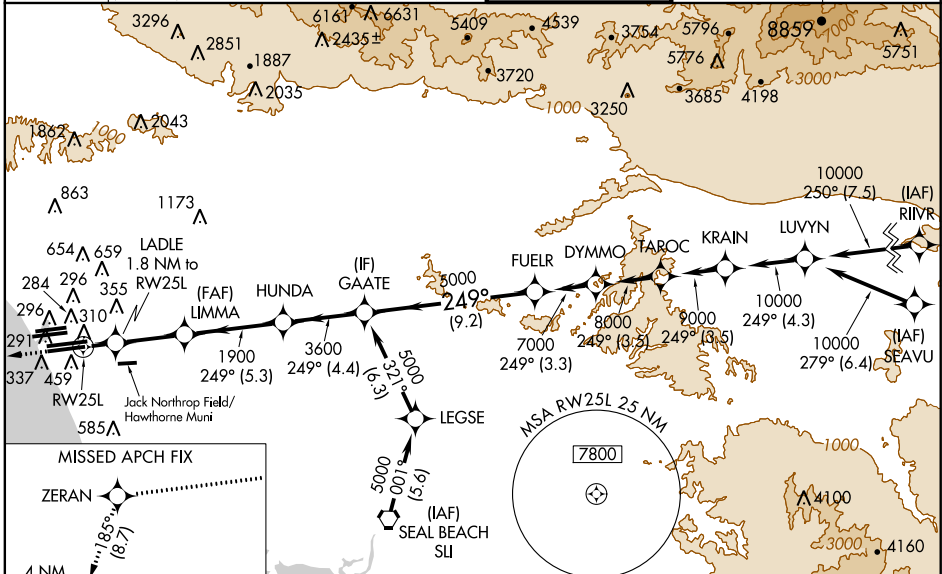
▼ For uncompensated Baro-VNAV systems, LNAV/VNAV NA below -15°C (5°F) or above 43°C (109°F). DME/DME RNP-0.3 NA. For inoperative ALSF-2, increase LPV all Cats visibility to RVR 4500, increase LNAV/VNAV all Cats visibility to 1½, and increase LNAV Cats C and D visibility to 1%. Simultaneous approach authorized with LAX 24L/R. Simultaneous approach authorized with HHR 25. LNAV only approach NA during simultaneous operations. Use of FD or AP providing RNAV track guidance required during simultaneous operations.

ALSF-2



MISSED APPROACH: Climb to 2000 direct ZERAN and on track 185° to CATLY and hold.

ATIS ARR <b>133.8</b> DEP <b>135.65</b>	<b>124.3 363.2</b> (APCH FM WEST) <b>124.5 235.975</b> (225°-044°)	SOCAL APP CON	<b>124.9 269.0</b> (090°-224°) <b>128.5 360.7</b> (045°-089°)	LOS ANGELES TOWER <b>N 133.9 239.3</b> <b>S 120.95 379.1</b>	GND CON <b>N 121.65 327.0</b> <b>S 121.75 327.0</b>	CLNC DEL <b>121.4 327.0</b>
---	---	---------------	--	--	---	--------------------------------



SW-3, 26 JUN 2014 to 24 JUL 2014

SW-3, 26 JUN 2014 to 24 JUL 2014

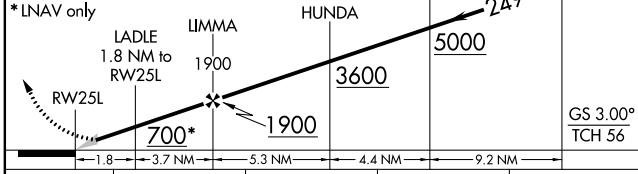
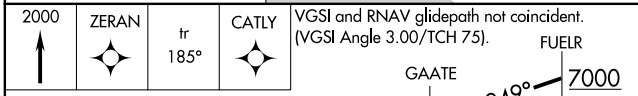
ELEV 126 THRE 98

MISSED APCH FIX

ZERAN 185° (8.7) 4 NM

CATLY 031° 211°

Procedure NA for arrivals on SLI VORTAC airway radials 251 CW 080.



CATEGORY	A	B	C	D
LPV DA	359/24 261 (300-½)			
LNAV/VNAV DA	569/60 471 (500-1¼)			
LNAV MDA	640/24 542 (600-½)	640/60 542 (600-1¼)		

ELEV 126 THRE 98

2000 ZERAN tr 185° CATLY

\*LNAV only

LADLE 1.8 NM to RW25L

LIMMA 1900

HUNDA 3600

GAATE 5000

FUEL 7000

GS 3.00° TCH 56

1.8 3.7 NM 5.3 NM 4.4 NM 9.2 NM

TDZ/CL Rwws 6R, 7L, 24R, and 25L  
HIRL all Rwws