

WAAS CH 56407 W24B	APP CRS 249°	Rwy Idg 10285 THRE 111 Apt Elev 126
---------------------------------	------------------------	--

RNAV (GPS) Y RWY 24L

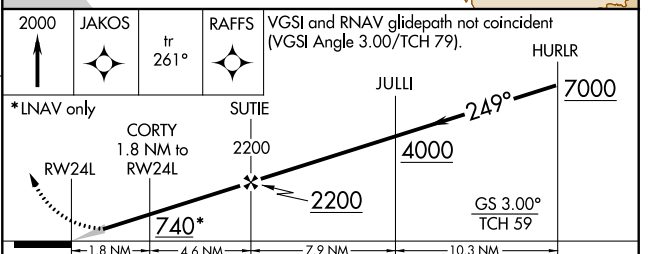
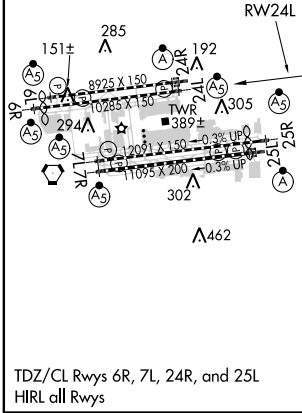
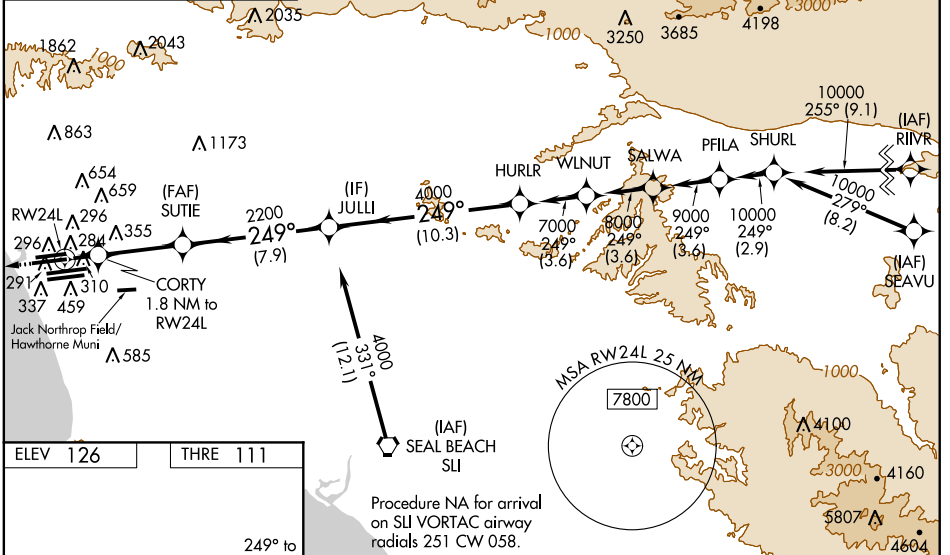
LOS ANGELES INTL (LAX)

▼ For uncompensated Baro-VNAV systems, LNAV/VNAV NA below -15°C (5°F) or above 42°C (107°F). DME/DME RNP: 0.3 NA. For inoperative MALSR, increase LPV all Cats visibility to RVR 6000. Simultaneous approach authorized with LAX 25L/R. Simultaneous approach authorized with HHR 25. LNAV only approach NA during simultaneous operations. Use of FD or AP providing RNAV track guidance required during simultaneous operations.



MISSED APPROACH: Climb to 2000 direct JAKOS and on track 261° to RAFFS and hold.

ATIS ARR 133.8 DEP 135.65	124.3 363.2 (APCH FM WEST) 124.5 235.975 (225°-044°)	SOCAL APP CON (090°-224°) (045°-089°)	LOS ANGELES TOWER N 133.9 239.3 S 120.95 379.1	GND CON N 121.65 327.0 S 121.75 327.0	CLNC DEL 121.4 327.0
---	---	---	--	---	--------------------------------



CATEGORY	A	B	C	D
LPV DA		459/30	348 (400- $\frac{3}{8}$)	
LNAV/VNAV DA		596/60	485 (500- $\frac{1}{4}$)	
LNAV MDA	660/24	549 (600- $\frac{1}{2}$)	660/60	549 (600- $\frac{1}{4}$)

SW-3, 26 JUN 2014 to 24 JUL 2014

SW-3, 26 JUN 2014 to 24 JUL 2014