

APP CRS	Rwy Idg	<b>12091</b>
<b>069°</b>	TDZE	<b>126</b>
	Apt Elev	<b>126</b>

# RNAV (RNP) Z RWY 7L

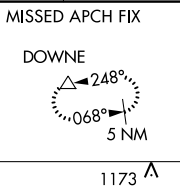
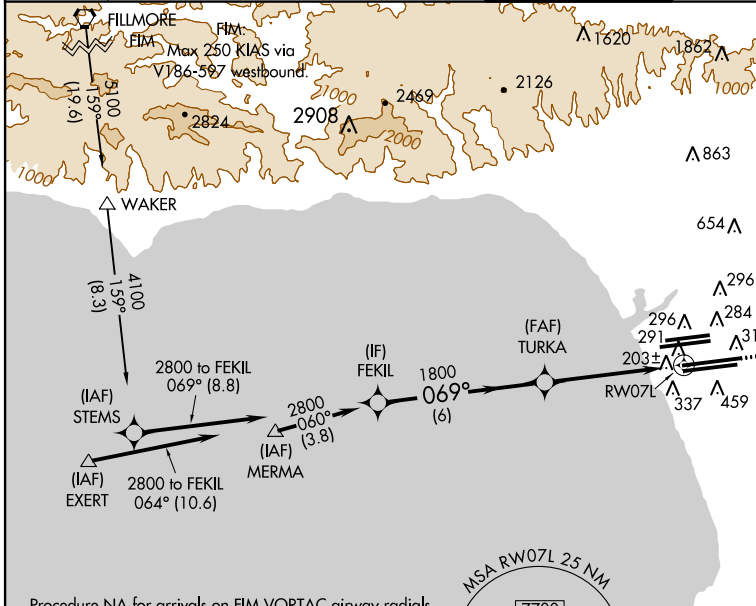
LOS ANGELES INTL (LAX)

**NA** GPS required. For uncompensated Baro-VNAV systems, procedure NA below 5°C (41°F), or above 48°C (118°F). For inoperative MALS/R, increase RNP 0.12 visibility to RVR 5000 and RNP 0.30 visibility to RVR 6000. Simultaneous approach authorized with Rwy 6L/R. Use of FD or AP providing RNAV track guidance required during simultaneous operations.



**MISSED APPROACH:** Climb to 3000 via 069° track to FILBA and via 070° track to DOWNE and hold.

ATIS	<b>124.3 363.2</b>	SOCAL APP CON	<b>124.9 269.0</b>	LOS ANGELES TOWER	GND CON	CLNC DEL
ARR	<b>133.8</b>	(APCH FM WEST)	(090°-224°)	<b>N 133.9 239.3</b>	<b>N 121.65 327.0</b>	
DEP	<b>135.65</b>	<b>124.5 235.975</b>	(225°-044°)	<b>128.5 360.7</b>	<b>S 121.75 327.0</b>	<b>121.4 327.0</b>
			(045°-089°)	<b>S 120.95 379.1</b>		

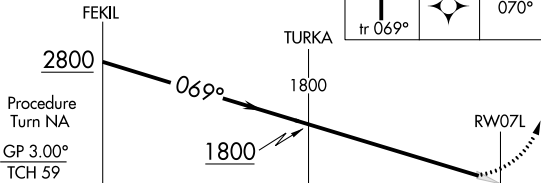
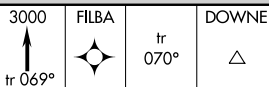


SW-3, 26 JUN 2014 to 24 JUL 2014

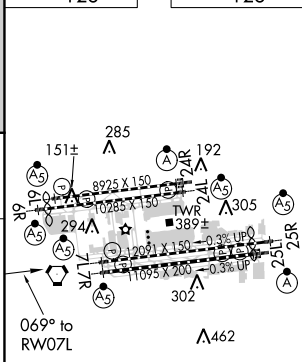
SW-3, 26 JUN 2014 to 24 JUL 2014

Procedure NA for arrivals on FIM VORTAC airway radials 148 CW 195.  
 Procedure NA for arrivals at EXERT via V25 westbound, V27 northwest bound.

VGSI and RNAV glidepath not coincident (VGSI Angle 3.00/TCH 83).



ELEV 126	TDZE 126
----------	----------



CATEGORY	A	B	C	D
RNP 0.12 DA		440/24	314 (400-½)	
RNP 0.30 DA		483/40	357 (400-¾)	

## AUTHORIZATION REQUIRED

TDZ/CL Rwy 6R, 7L, 24R, and 25L  
 HIRL all Rwy's