

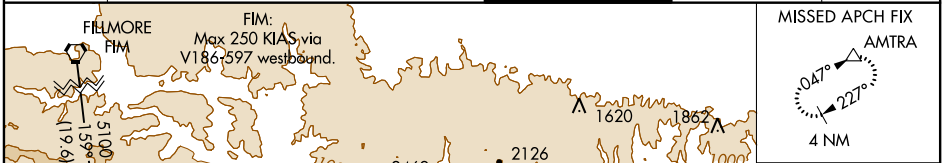
APP CRS	Rwy Idg	8925
069°	TDZE	117
	Apt Elev	126

RNAV (RNP) Z RWY 6L

LOS ANGELES INTL (LAX)

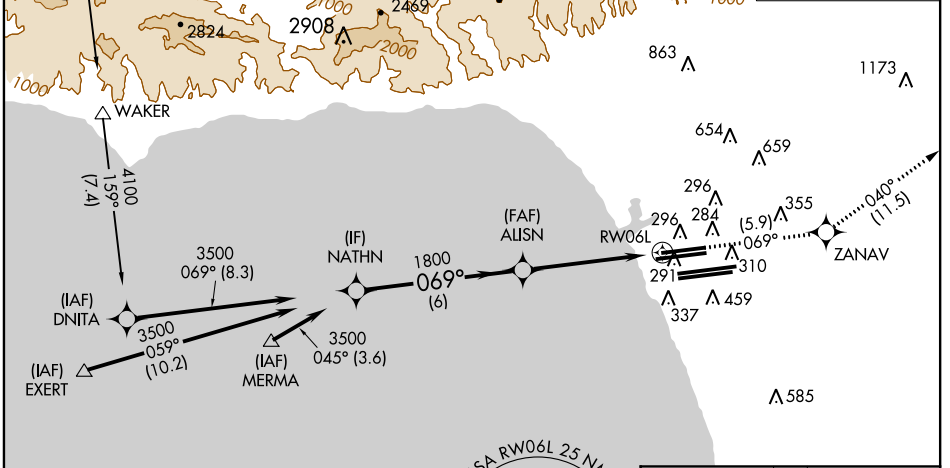
NA GPS required. For uncompensated Baro-VNAV systems, procedure NA below 5°C (41°F), or above 48°C (119°F). Inoperative table does not apply. Simultaneous approach authorized Rwy 7L/R. Use of FD or AP providing RNAV track guidance required during simultaneous operations.	MAISR 	MISSED APPROACH: Climb to 3000 via 069° track to ZANAV and via 040° track to AMTRA and hold.

ATIS	124.3 363.2	SOCAL APP CON	124.9 269.0	LOS ANGELES TOWER	GND CON	CLNC DEL
ARR	133.8	(APCH FM WEST)	(090°-224°)	N 133.9 239.3	N 121.65 327.0	
DEP	135.65	124.5 235.975	(045°-089°)	S 120.95 379.1	S 121.75 327.0	121.4 327.0



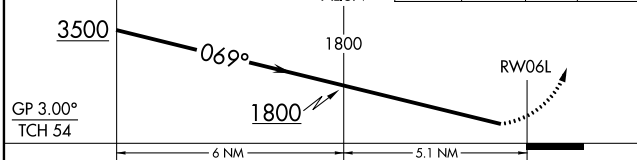
SW-3, 26 JUN 2014 to 24 JUL 2014

SW-3, 26 JUN 2014 to 24 JUL 2014



Procedure NA for arrivals on FIM VORTAC airway radials 148 CW 195.
 Procedure NA for arrivals at EXERT via V25 westbound, V27 northwest bound.
 Procedure NA for arrivals at MERMA via V25 westbound.

Procedure Turn NA	VGSI and RNAV glidepath not coincident (VGSi Angle 3.00/TCH 77).	3000	ZANAV	tr 040°	AMTRA
NATHN	AUISN				



CATEGORY	A	B	C	D
RNP 0.30 DA	436/50 319 (400-1)			

ELEV 126	TDZE 117
----------	----------

TDZ/CL Rwsy 6R, 7L, 24R, and 25L
 HIRL all Rwsy

AUTHORIZATION REQUIRED