

| | | |
|-------------|----------|--------------|
| APP CRS | Rwy Idg | 11095 |
| 249° | THRE | 98 |
| | Apt Elev | 126 |

RNAV (RNP) Z RWY 25L

LOS ANGELES INTL (LAX)

NA For uncompensated Baro-VNAV systems, procedure NA below 4°C (40°F), or above 48°C (118°F). For inoperative ALSF-2 increase visibility RNP 0.12 all Cats to RVR 5000, RNP 0.17 all Cats to RVR 6000, and increase RNP 0.30 all Cats to 1½ mile. GPS required. Simultaneous approach authorized with LAX 24L/R. Simultaneous approach authorized with HHR 25. Use of FD or AP providing RNAV track guidance required during simultaneous operations.



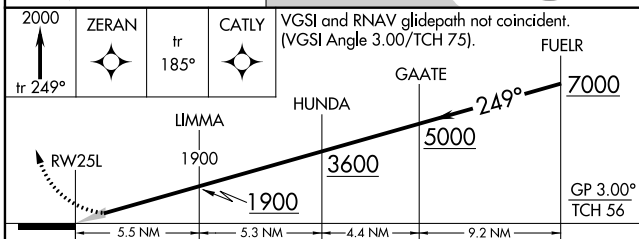
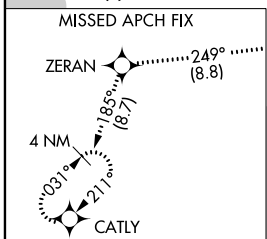
ALSF-2
MISSED APPROACH: Climb to 2000 on track 249° to ZERAN and on track 185° to CATLY and hold.

| | | | | | | |
|------|--------------------|----------------------|--------------------|-----------------------|-----------------------|--------------------|
| ATIS | 124.3 363.2 | SOCAL APP CON | 124.9 269.0 | LOS ANGELES TOWER | GND CON | CLNC DEL |
| ARR | 133.8 | (APCH FM WEST) | (090°-224°) | N 133.9 239.3 | N 121.65 327.0 | |
| DEP | 135.65 | 124.5 235.975 | (1225°-044°) | 128.5 360.7 | S 121.75 327.0 | 121.4 327.0 |
| | | | (045°-089°) | S 120.95 379.1 | | |



SW-3, 26 JUN 2014 to 24 JUL 2014

SW-3, 26 JUN 2014 to 24 JUL 2014



| CATEGORY | A | B | C | D |
|-------------|---|--------|-------------|---|
| RNP 0.12 DA | | 407/24 | 309 (300-½) | |
| RNP 0.17 DA | | 458/40 | 360 (400-¾) | |
| RNP 0.30 DA | | 539/50 | 441 (500-1) | |

AUTHORIZATION REQUIRED

| | |
|----------|---------|
| ELEV 126 | THRE 98 |
|----------|---------|

TDZ/CL Rwy's 6R, 7L, 24R, and 25L
HIRL all Rwy's