

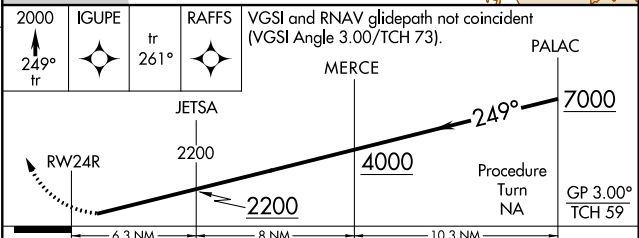
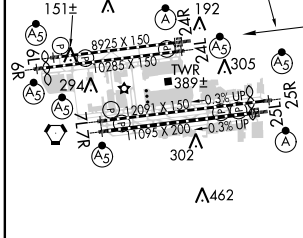
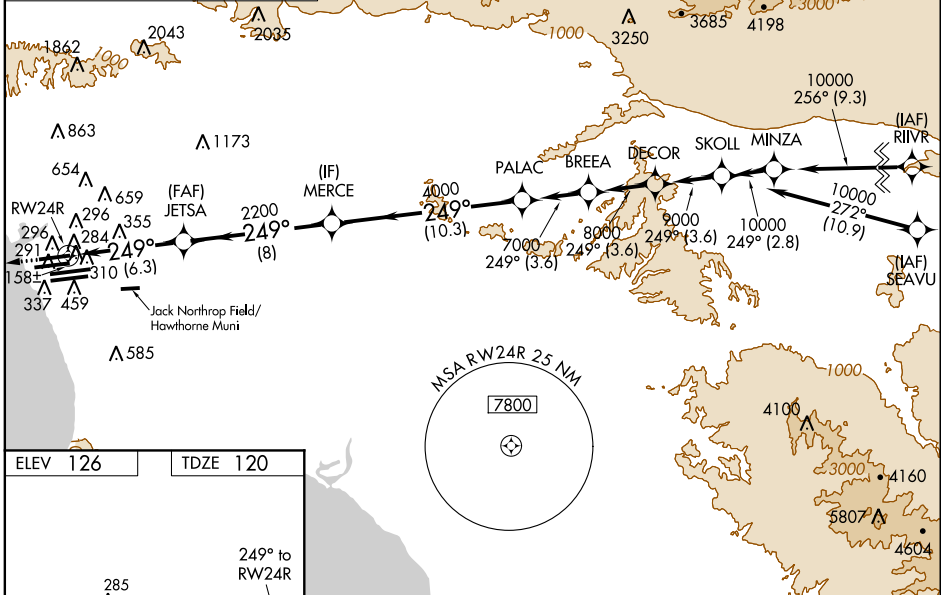
APP CRS 249°	Rwy Idg TDZE Apt Elev	8925 120 126
------------------------	-----------------------------	---

RNAV (RNP) Z RWY 24R

LOS ANGELES INTL (LAX)

NA For uncompensated Baro-VNAV systems, procedure NA below 5°C (40°F) or above 48°C (119°F). For inoperative ALSF-2 increase RNP 0.16 visibility to RVR 6000 and RNP 0.30 to 1½ miles. GPS required. Simultaneous approach authorized with LAX 25/R. Simultaneous approach authorized with HHR 25. Use of FD or AP providing RNAV track guidance required during simultaneous operations.	ALSF-2	MISSED APPROACH: Climb to 2000 via 249° track to IGUPE and via 261° track to RAFFS and hold.

ATIS ARR 133.8 DEP 135.65	124.3 363.2 (ARCH FM WEST) 124.5 235.975 (225°-044°)	SOCIAL APP CON 124.9 269.0 (090°-224°) 128.5 360.7 (045°-089°)	LOS ANGELES TOWER N 133.9 239.3 S 120.95 379.1	GND CON N 121.65 327.0 S 121.75 327.0	CLNC DEL 121.4 327.0
---	---	--	--	---	--------------------------------



CATEGORY	A	B	C	D
RNP 0.16 DA		485/40	365 (400-¾)	
RNP 0.30 DA		584/60	464 (500-1¼)	

TDZ/CL Rwy's 6R, 7L, 24R, and 25L
HIRL all Rwy's

LOS ANGELES, CALIFORNIA
Orig-B 09JAN14

LOS ANGELES INTL (LAX)
33°57'N-118°24'W

AUTHORIZATION REQUIRED

RNAV (RNP) Z RWY 24R

SW-3, 26 JUN 2014 to 24 JUL 2014