

# RNAV (RNP) Z RWY 24L

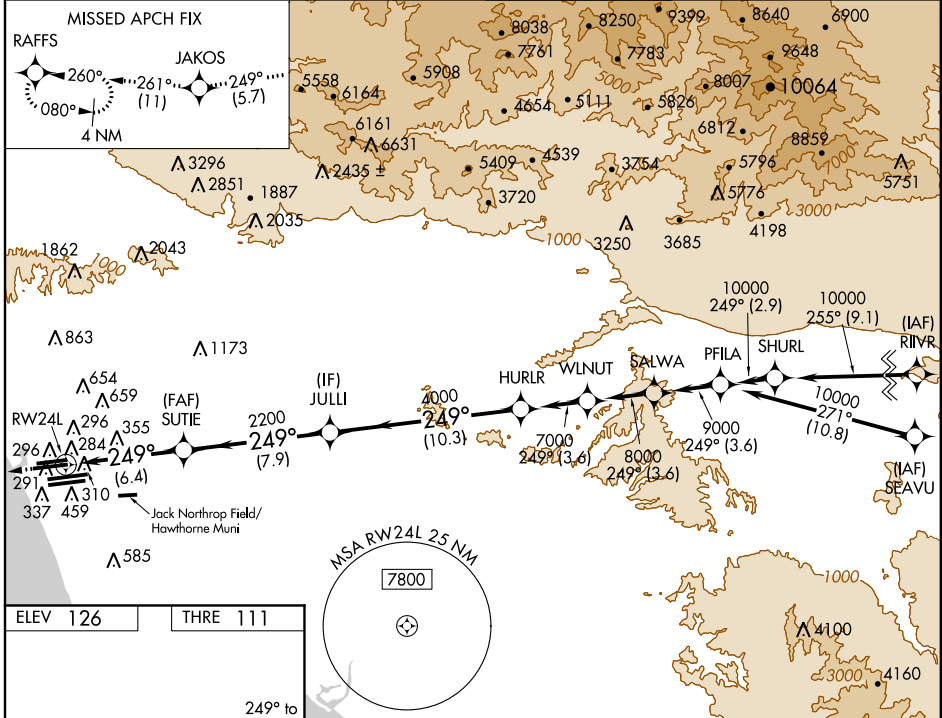
LOS ANGELES INTL (LAX)

APP CRS	Rwy Idg	<b>10285</b>
<b>249°</b>	THRE	<b>111</b>
	Apt Elev	<b>126</b>

**NA** For uncompensated Baro-VNAV systems, procedure NA below 4°C (40°F) or above 49°C (120°F). For inoperative MALS/R, increase visibility RNP 0.15 and RNP 0.30 all Cats to 1½ mile. GPS required. Simultaneous approach authorized with LAX 25L/R. Simultaneous approach authorized with HHR 25. Use of FD or AP providing RNAV track guidance required during simultaneous operations.

**MALS/R** MISSED APPROACH: Climb to 2000 on track 249° to JAKOS and on track 261° to RAFFS and hold.

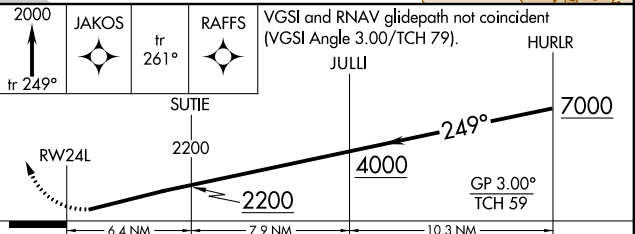
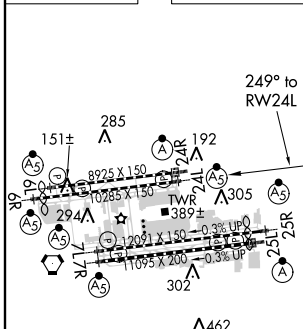
ATIS	<b>124.3 363.2</b>	SOCAL APP CON	<b>124.9 269.0</b>	LOS ANGELES TOWER	<b>N 133.9 239.3</b>	GND CON	<b>N 121.65 327.0</b>	CLNC DEL	<b>121.4 327.0</b>
ARR	<b>133.8</b>								
DEP	<b>135.65</b>	<b>124.5 235.975</b>		<b>128.5 360.7</b>	<b>S 120.95 379.1</b>		<b>S 121.75 327.0</b>		



SW-3, 26 JUN 2014 to 24 JUL 2014

SW-3, 26 JUN 2014 to 24 JUL 2014

ELEV	126	THRE	111
------	-----	------	-----



CATEGORY	A	B	C	D
RNP 0.15 DA		539/50	428 (500-1)	
RNP 0.30 DA		582/60	471 (500-1¼)	

**AUTHORIZATION REQUIRED**