

SW-3, 26 JUN 2014 to 24 JUL 2014

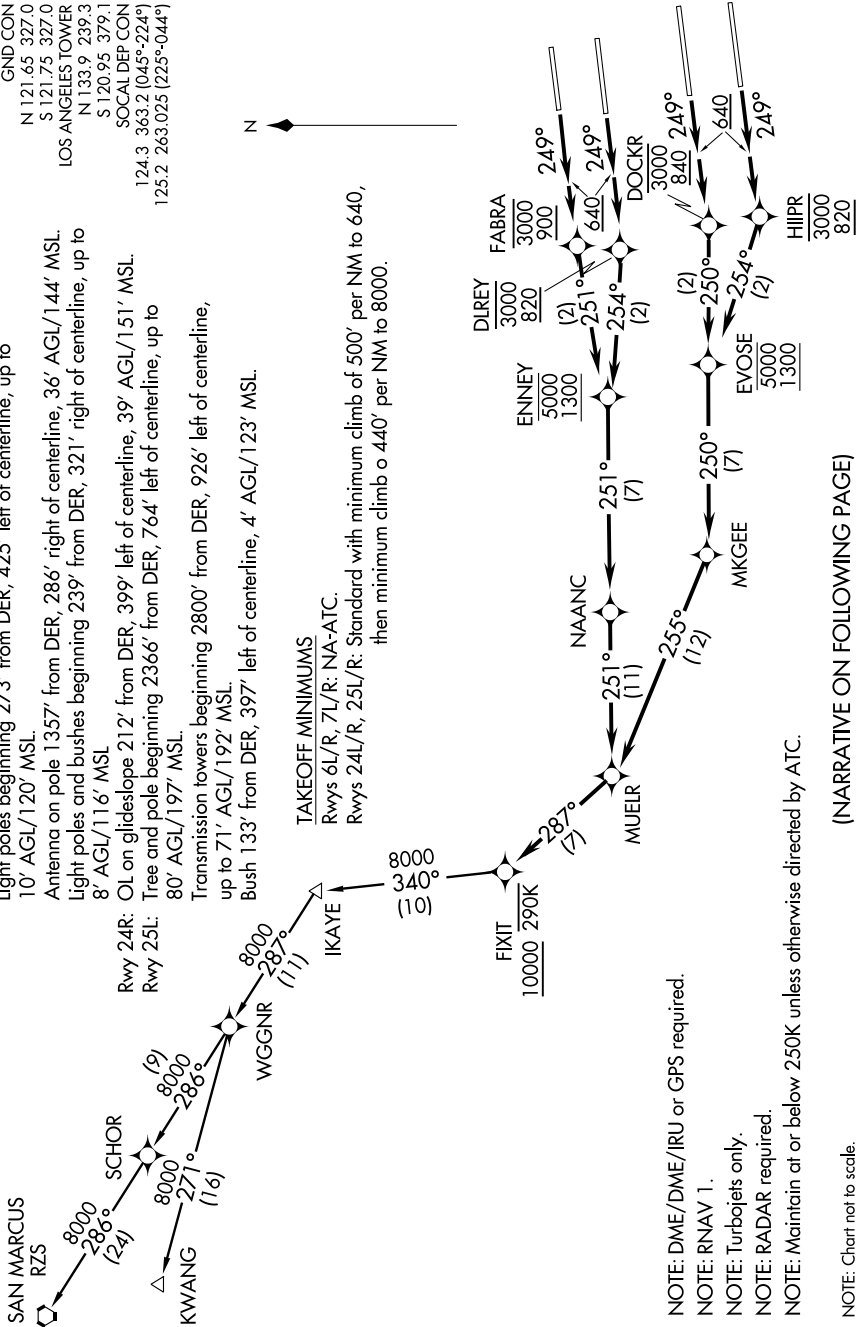
TAKEOFF OBSTACLES NOTES

- Rwy 24L: Bush 956' from DER, 600' left of centerline, 40' AGL/148' MSL.  
Light poles beginning 273' from DER, 425' left of centerline, up to 10' AGL/120' MSL.
- Antenna on pole 1357' from DER, 286' right of centerline, 36' AGL/144' MSL.
- Light poles and bushes beginning 239' from DER, 321' right of centerline, up to 8' AGL/116' MSL
- Rwy 24R: OL on glideslope 212' from DER, 399' left of centerline, 39' AGL/151' MSL.
- Rwy 25L: Tree and pole beginning 2366' from DER, 764' left of centerline, up to 80' AGL/197' MSL.
- Transmission towers beginning 2800' from DER, 926' left of centerline, up to 71' AGL/192' MSL.
- Bush 133' from DER, 397' left of centerline, 4' AGL/123' MSL.

TAKEOFF MINIMUMS

- Rwys 6L/R, 7L/R: NA-ATC.
- Rwys 24L/R, 25L/R: Standard with minimum climb of 500' per NM to 640, then minimum climb of 440' per NM to 8000.

- ATIS 135.65
- CNCL DEL 121.4 327.0
- GND CON N 121.65 327.0
- S 121.75 327.0
- LOS ANGELES TOWER N 133.9 239.3
- S 120.95 379.1
- SOCAL DEP CON 124.3 363.2 (045°-224°)
- 125.2 263.025 (225°-044°)



NOTE: DME/DME/IRU or GPS required.

NOTE: RNAV 1.

NOTE: Turbojets only.

NOTE: RADAR required.

NOTE: Maintain at or below 250K unless otherwise directed by ATC.

NOTE: Chart not to scale.

(NARRATIVE ON FOLLOWING PAGE)

SW-3, 26 JUN 2014 to 24 JUL 2014