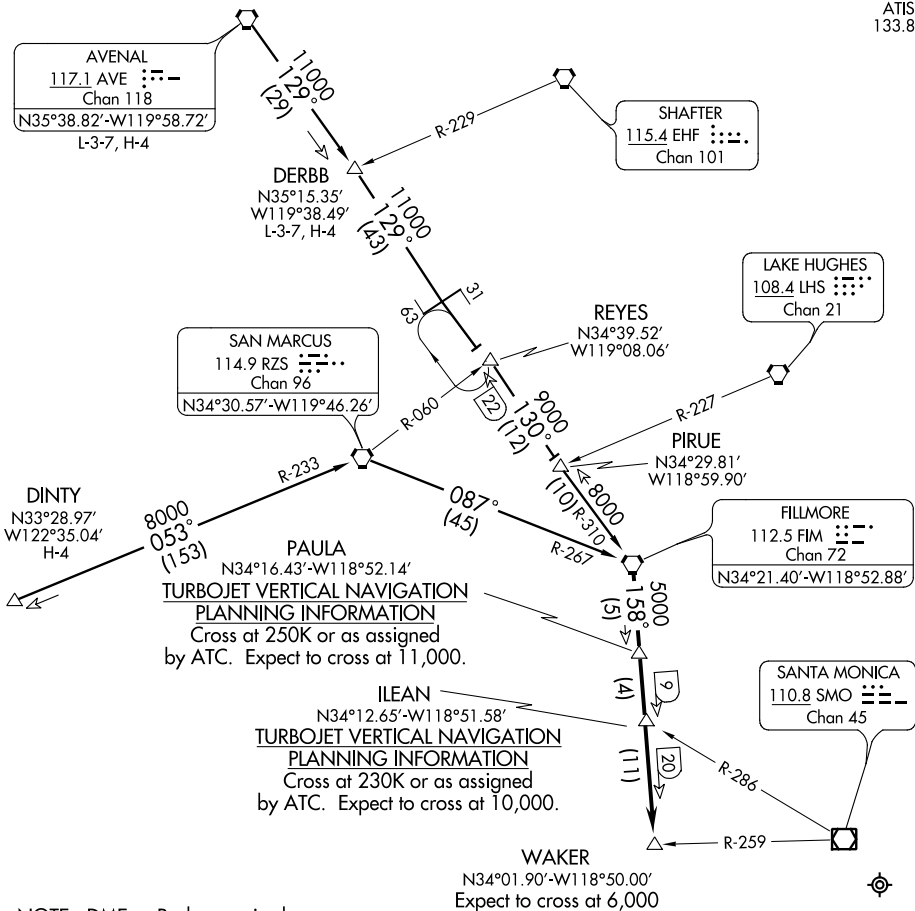


MOORPARK THREE ARRIVAL

ST-237 (FAA)

LOS ANGELES INTL
LOS ANGELES, CALIFORNIA

SOCAL APP CON
124.5 235.975
ATIS
133.8



SW-3, 26 JUN 2014 to 24 JUL 2014

SW-3, 26 JUN 2014 to 24 JUL 2014

NOTE: DME or Radar required.
NOTE: Chart not to scale.

AVENAL TRANSITION (AVE.MOOR3): From over AVE VORTAC via AVE R-129 and FIM R-310 to FIM VORTAC. Thence....

DERBB TRANSITION (DERBB.MOOR3): From over DERBB INT via AVE R-129 and FIM R-310 to FIM VORTAC. Thence....

DINTY TRANSITION (DINTY.MOOR3): From over DINTY INT via RZS R-233 to RZS VORTAC. Then via RZS R-087 and FIM R-267 to FIM VORTAC. Thence....

....From over FIM VORTAC via FIM R-158 to WAKER INT. For Runways 6L/R or 7L/R: From WAKER INT expect vector to final approach course for LOS ANGELES INTERNATIONAL AIRPORT.

MOORPARK THREE ARRIVAL