

(KEACH.KEACH1) 12264

# KEACH ONE ARRIVAL (RNAV)

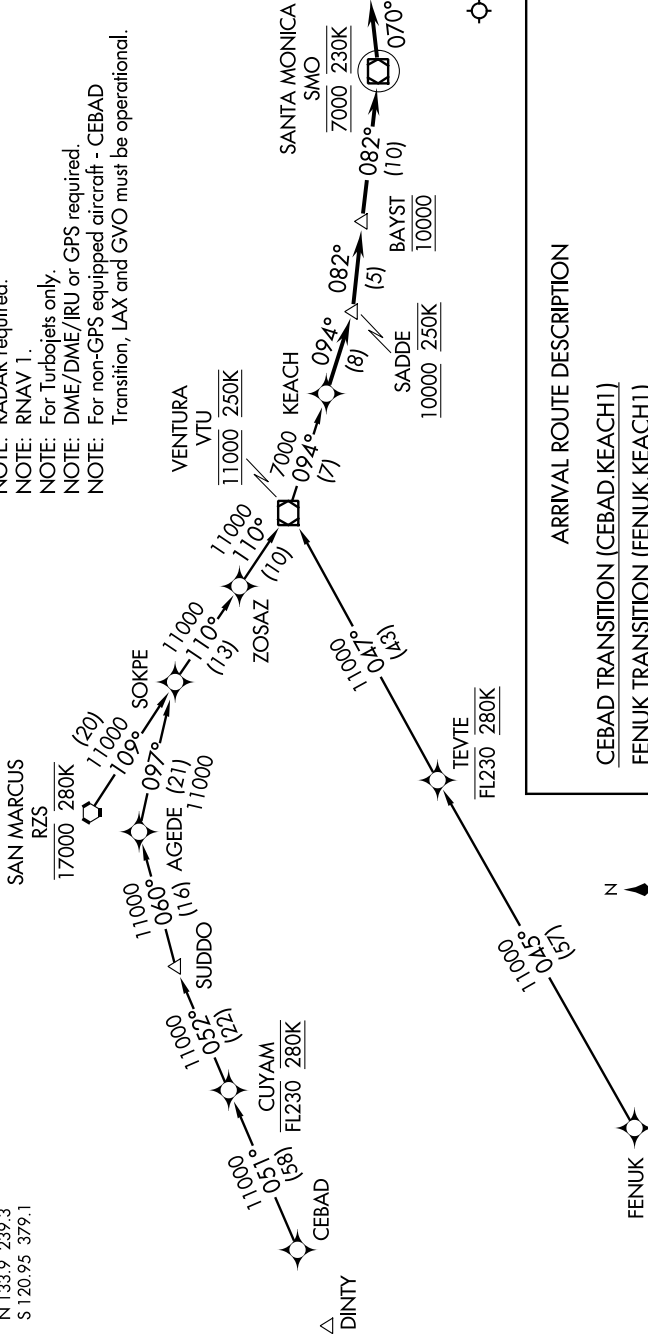
ST-237 (FAA)

LOS ANGELES INTL (LAX)  
LOS ANGELES, CALIFORNIA

SW-3, 26 JUN 2014 to 24 JUL 2014

SOCAL APP CON  
124.5 235.975  
LOS ANGELES TOWER  
N 133.9 239.3  
S 120.95 379.1

NOTE: Rwy 25L/R or 24 L/R: Expect RADAR vectors to the final approach course.  
NOTE: RADAR required.  
NOTE: RNAV 1.  
NOTE: For Turboprops only.  
NOTE: DME/DME/IRU or GPS required.  
NOTE: For non-GPS equipped aircraft - CEBAD Transition, LAX and GVO must be operational.



## ARRIVAL ROUTE DESCRIPTION

- CEBAD TRANSITION (CEBAD.KEACH1)
- FENUK TRANSITION (FENUK.KEACH1)
- SAN MARCUS TRANSITION (RZS.KEACH1)
- VENTURA TRANSITION (VTU.KEACH1)

From KEACH on track 094° to cross SADD at or above 10000 at 250K, then on track 082° to cross BAYST at 10000, thence as depicted to cross SMO VOR/DME at 7000 at 230K, then on heading 070° for RADAR vectors.

△ ELKEY

NOTE: Chart not to scale.

# KEACH ONE ARRIVAL (RNAV)

(KEACH.KEACH1) 12264

LOS ANGELES, CALIFORNIA  
LOS ANGELES INTL (LAX)

SW-3, 26 JUN 2014 to 24 JUL 2014