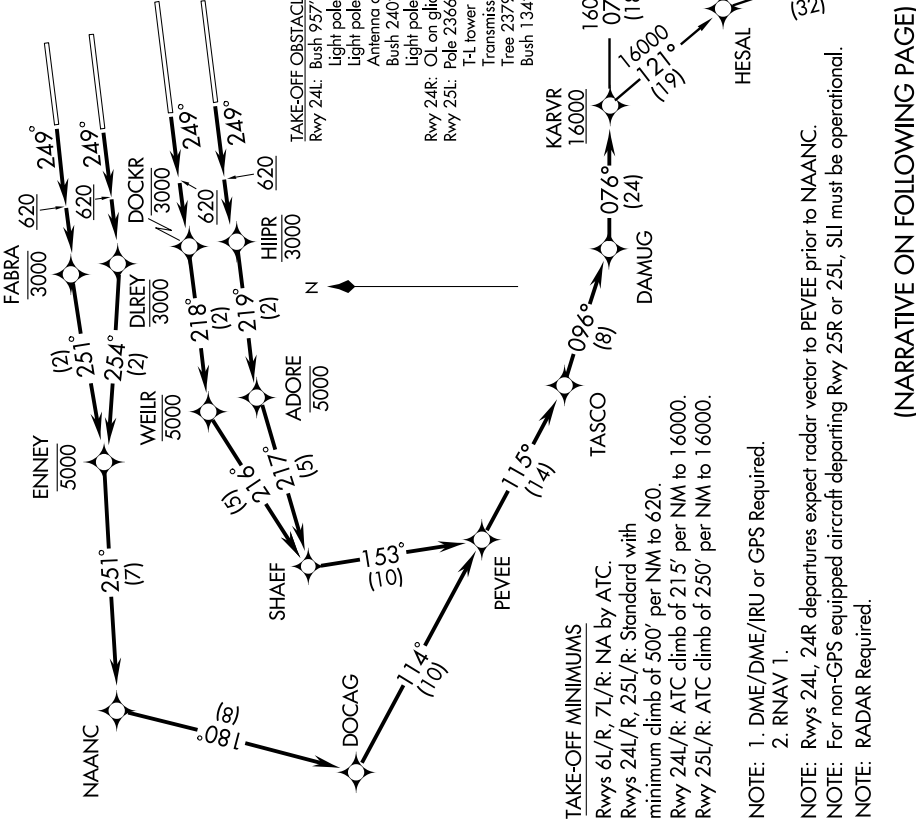


SW-3, 26 JUN 2014 to 24 JUL 2014

ATIS 135.65
CLNC DEL 121.4 327.0
GND CON N 121.65 327.0
S 121.75 327.0
LOS ANGELES TOWER N 133.9 239.3
S 120.95 379.1
SOCAL DEP CON 124.3 363.2 (045°-224°)
125.2 263.025 (225°-044°)

TAKE-OFF OBSTACLE NOTES

Rwy 24L: Bush 957' from DER, 601' left of centerline, 29' AGL/148' MSL
Light pole 273' from DER, 547' left of centerline, 12' AGL/120' MSL
Light pole 301' from DER, 425' left of centerline, 10' AGL/118' MSL
Antenna on pole 1358' from DER, 287' right of centerline 25' AGL/144' MSL
Bush 240' feet from DER, 508' right of centerline, 10' AGL/116' MSL
Light pole 296' from DER, 321' right of centerline, 8' AGL/116' MSL
OL on glide slope 213' from DER, 400' left of centerline, 34' AGL/151' MSL
Rwy 24R: OL on glide slope 213' from DER, 765' left of centerline, 55' AGL/184' MSL
Rwy 25I: Pole 2366' from DER, 993' left of centerline, 82' AGL/192' MSL
T-1 lower 2800' from DER, 993' left of centerline, 82' AGL/192' MSL
Transmission tower 2856' from DER, 927' left of centerline, 82' AGL/192' MSL
Tree 2379' from DER, 778' left of centerline, 79' AGL/197' MSL
Bush 134' from DER, 397' left of centerline, 5' AGL/123' MSL



TAKE-OFF MINIMUMS
RWYs 6L/R, 7L/R: NA by ATC.
RWYs 24L/R, 25L/R: Standard with minimum climb of 500' per NM to 620.
RWY 24L/R: ATC climb of 215' per NM to 16000.
RWY 25L/R: ATC climb of 250' per NM to 16000.

- NOTE: 1. DME/DME/IRU or GPS Required.
- 2. RNAV 1.
- NOTE: RWYs 24L, 24R departures expect radar vector to PEVEE prior to NAAINC.
- NOTE: For non-GPS equipped aircraft departing RWY 25R or 25L, SLI must be operational.
- NOTE: RADAR Required.

(NARRATIVE ON FOLLOWING PAGE)

NOTE: Chart not to scale.