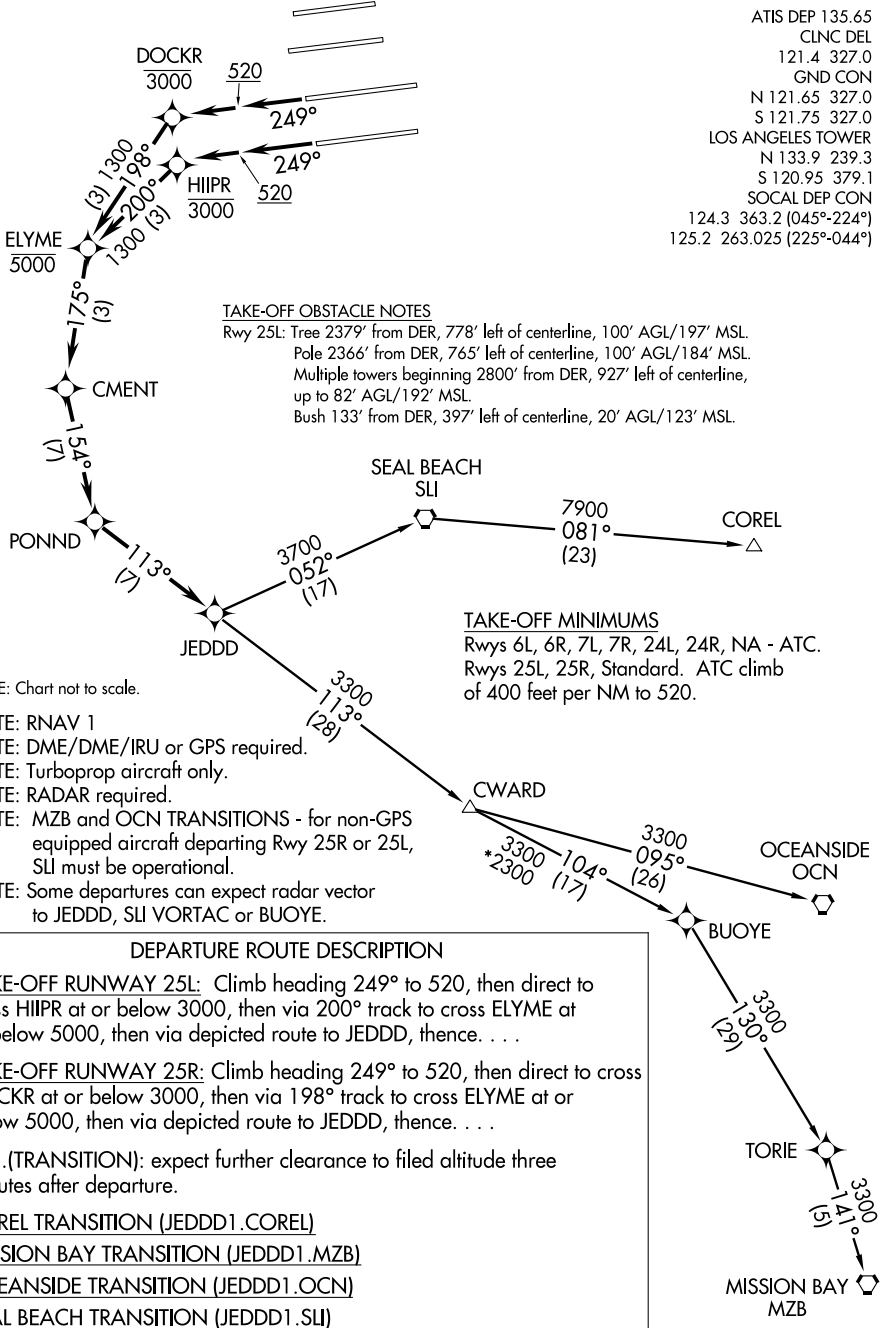


JEDDD ONE DEPARTURE (RNAV)

SL-237 (FAA)

LOS ANGELES INTL (LAX)
LOS ANGELES, CALIFORNIA

ATIS DEP 135.65
 CLNC DEL 121.4 327.0
 GND CON N 121.65 327.0
 S 121.75 327.0
 LOS ANGELES TOWER N 133.9 239.3
 S 120.95 379.1
 SOCIAL DEP CON 124.3 363.2 (045°-224°)
 125.2 263.025 (225°-044°)



NOTE: Chart not to scale.

NOTE: RNAV 1

NOTE: DME/DME/IRU or GPS required.

NOTE: Turboprop aircraft only.

NOTE: RADAR required.

NOTE: MZB and OCN TRANSITIONS - for non-GPS equipped aircraft departing Rwy 25R or 25L, SLI must be operational.

NOTE: Some departures can expect radar vector to JEDDD, SLI VORTAC or BUOYE.

DEPARTURE ROUTE DESCRIPTION

TAKE-OFF RUNWAY 25L: Climb heading 249° to 520, then direct to cross HIIPR at or below 3000, then via 200° track to cross ELYME at or below 5000, then via depicted route to JEDDD, thence. . . .

TAKE-OFF RUNWAY 25R: Climb heading 249° to 520, then direct to cross DOCKR at or below 3000, then via 198° track to cross ELYME at or below 5000, then via depicted route to JEDDD, thence. . . .

. . . (TRANSITION): expect further clearance to filed altitude three minutes after departure.

COREL TRANSITION (JEDDD1..COREL)

MISSION BAY TRANSITION (JEDDD1..MZB)

OCEANSIDE TRANSITION (JEDDD1..OCN)

SEAL BEACH TRANSITION (JEDDD1..SLI)

JEDDD ONE DEPARTURE (RNAV)

SW-3, 26 JUN 2014 to 24 JUL 2014

SW-3, 26 JUN 2014 to 24 JUL 2014