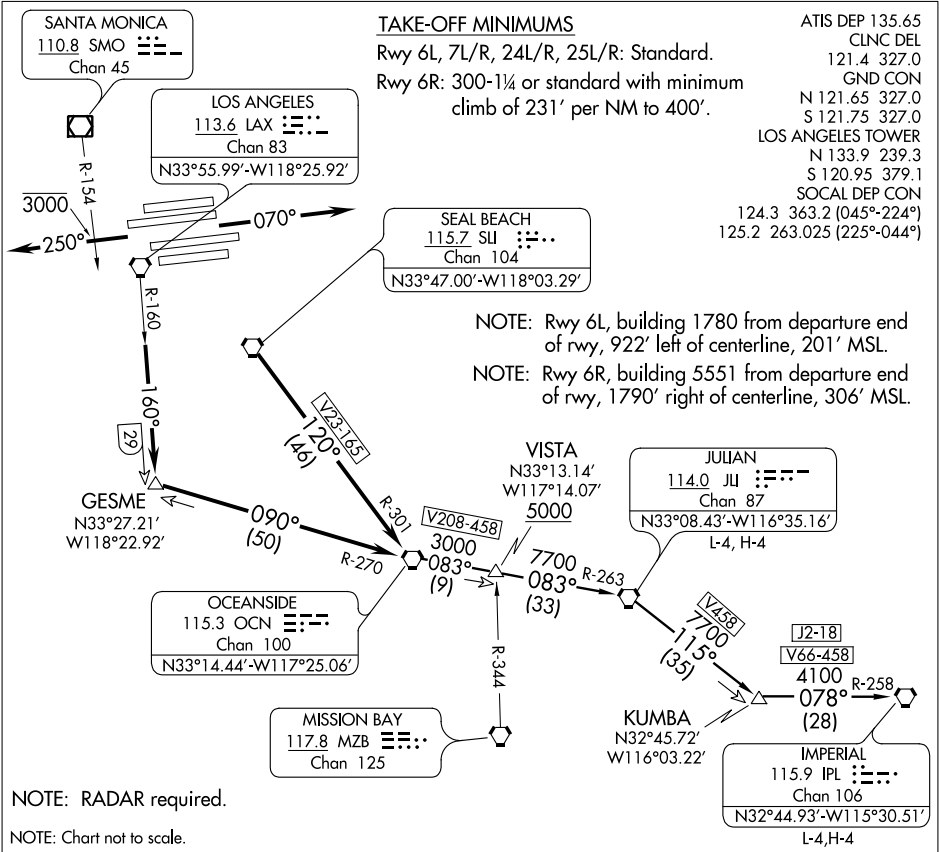


(IMPER1.IMPER) 11125

IMPER ONE DEPARTURE

SL-237 (FAA)

LOS ANGELES INTL (LAX)
LOS ANGELES, CALIFORNIA



SW-3, 26 JUN 2014 to 24 JUL 2014

SW-3, 26 JUN 2014 to 24 JUL 2014

DEPARTURE ROUTE DESCRIPTION

TAKE-OFF RUNWAYS 6L/R, 7L/R: Climb via heading 070° for vector to SLI VORTAC, then via SLI R-120 and OCN R-301 to OCN VORTAC. Thence. . .

TAKE-OFF RUNWAYS 24L/R, 25L/R: Climb via heading 250° to cross SMO R-154 at or below 3000. Then via radar vectors to join LAX R-160 to GESME INT. Then via OCN R-270 to OCN VORTAC. Thence. . .

. . . via (assigned transition) or (assigned route). All aircraft expect further clearance to filed flight level three minutes after departure.

LOST COMMUNICATIONS: If not in contact with Departure Control within five minutes after departure, climb to FL230 or filed altitude whichever is lower. Aircraft filing FL240 or above climb to filed altitude ten minutes after departure.

IMPERIAL TRANSITION (IMPER1.IPL): From over OCN VORTAC via OCN R-083 and JLI R-263 to JLI VORTAC. Then via JLI R-115 and IPL R-258 to IPL VORTAC.

JULIAN TRANSITION (IMPER1.JLI): From over OCN VORTAC via OCN R-083 and JLI R-263 to JLI VORTAC.

IMPER ONE DEPARTURE
(IMPER1.IMPER) 11125

LOS ANGELES, CALIFORNIA
LOS ANGELES INTL (LAX)