

LOC/DME I-MKZ 109.9 Chan 36	APP CRS 069°	Rwy Idg THRE Apt Elev	7R 11095 119 126	7L 12091 119 126
--	------------------------	-----------------------------	--	--

ILS or LOC RWY 7R

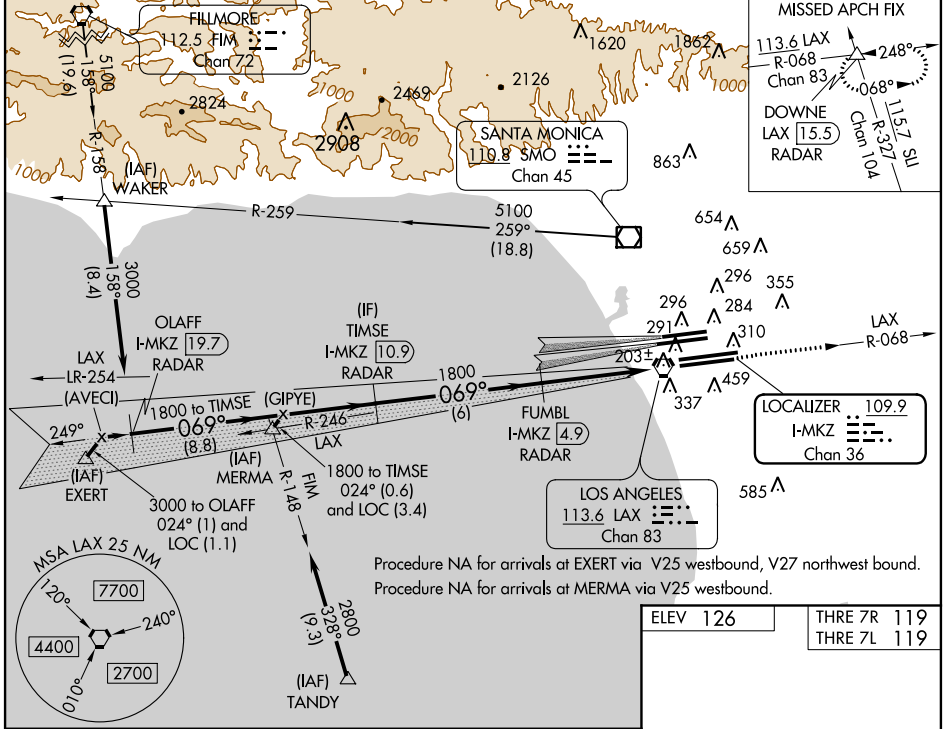
LOS ANGELES INTL (LAX)

▼ DME or RADAR required. Autopilot coupled approach NA below 264. For inoperative MALS, increase S-LOC 7R Cat D visibility to RVR 5000. Inoperative table does not apply to Sidestep Rwy 7L Cat A/B. Simultaneous approach authorized with Rwy 6L/R.

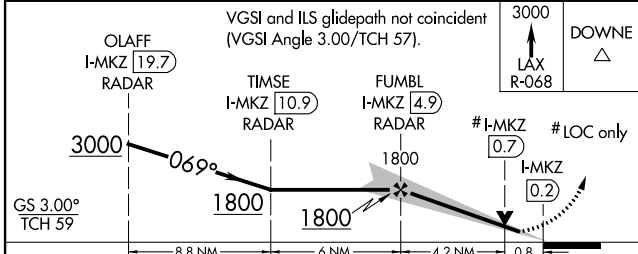
MALS Rwy 7R and 7L

MISSED APPROACH: Climb to 3000 via LAX VORTAC R-068 to DOWNE INT/LAX 15.5 DME/RADAR and hold.

ATIS ARR 133.8 DEP 135.65	124.3 363.2 (ARCP FM WEST) 124.5 235.975 (225°-044°)	SOCAL APP CON	124.9 269.0 (090°-224°) 128.5 360.7 (045°-089°)	LOS ANGELES TOWER N 133.9 239.3 S 120.95 379.1	GND CON N 121.65 327.0 S 121.75 327.0	CLNC DEL 121.4 327.0
---	---	---------------	--	--	---	--------------------------------

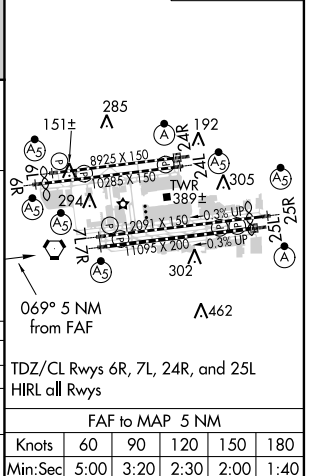


Procedure NA for arrivals at EXERT via V25 westbound, V27 northwest bound.
Procedure NA for arrivals at MERMA via V25 westbound.



ELEV 126	THRE 7R 119
	THRE 7L 119

CATEGORY	A	B	C	D
S-ILS 7R	319/24 200 (200-½)			
S-LOC 7R	460/24 341 (400-½)			460/40 341 (400-¾)
SIDESTEP 7L	520/50 401 (400-1)			520-1½ 401 (400-1½)



SW-3, 26 JUN 2014 to 24 JUL 2014

SW-3, 26 JUN 2014 to 24 JUL 2014