

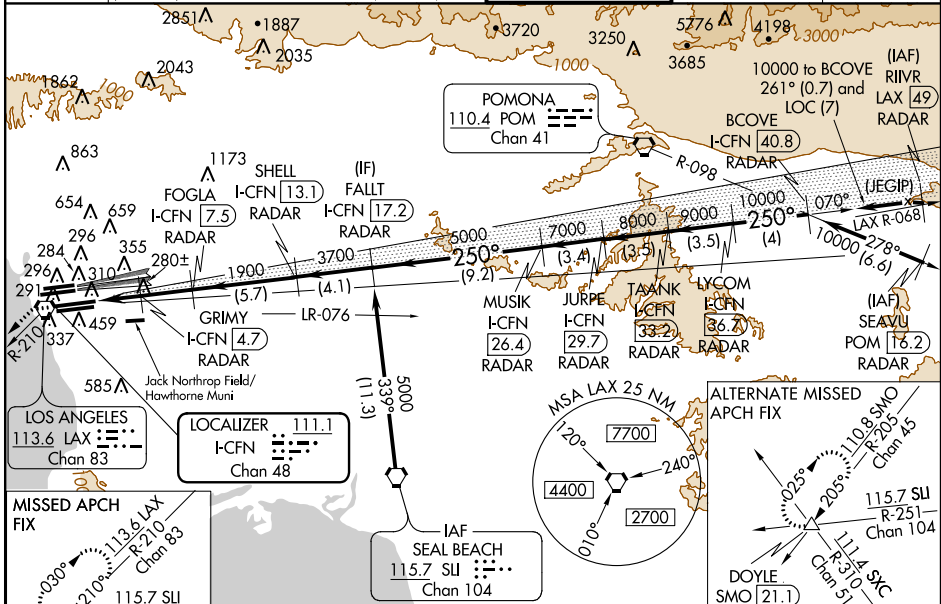
LOC/DME I-FCFN 111.1 Chan 48	APP CRS 250°	Rwy Idg THRE 94 Apt Elev 126	25R 11134	25L 11095
--	------------------------	--	---------------------	---------------------

ILS or LOC RWY 25R

LOS ANGELES INTL (LAX)

Simultaneous approach authorized with LAX 24L/R. Simultaneous approach authorized with HHR 25. DME or RADAR required for LOC 25R minimums. For inoperative MALSR, increase S-LOC 25R Cats C and D visibility to 1 3/8 miles, sidestep S-25L Cats C and D visibility to 1 1/2 miles, inoperative table does not apply to sidestep 25L Cats A and B.
 ** RVR 1800 authorized with use of FD or AP or HUD to DA.

ATIS ARR 133.8 DEP 135.65	124.3 363.2 (APCH FM WEST)	SOCAL APP CON 124.9 269.0 (090°-224°)	LOS ANGELES TOWER N 133.9 239.3 S 120.95 379.1	GND CON N 121.65 327.0 S 121.75 327.0	CLNC DEL 121.4 327.0
---	--------------------------------------	--	--	---	--------------------------------

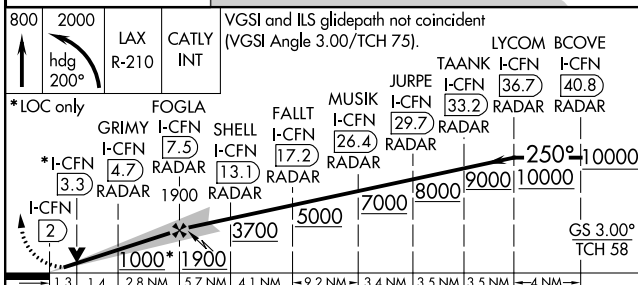


SW-3, 26 JUN 2014 to 24 JUL 2014

SW-3, 26 JUN 2014 to 24 JUL 2014

Procedure NA for arrival at SLI VORTAC via V459-597 southbound.

DME or RADAR REQUIRED



800	2000	LAX R-210	CATLY INT					
*LOC only								
*I-FCFN (3.3) RADAR								
FOGLA I-FCFN (7.5) RADAR								
GRIMY I-FCFN (4.7) RADAR								
SHELL I-FCFN (13.1) RADAR								
FALLT I-FCFN (17.2) RADAR								
MUSIK I-FCFN (26.4) RADAR								
JURPE I-FCFN (29.7) RADAR								
TAANK I-FCFN (33.2) RADAR								
LYCOM I-FCFN (36.7) RADAR								
BCOVE I-FCFN (40.8) RADAR								
GS 3.00° TCH 58								
CATEGORY	1.3	1.4	2.8 NM	5.7 NM	4.1 NM	3.4 NM	3.5 NM	4 NM
S-ILS 25R	**294/24 200 (200-1/2)							
S-LOC 25R	560/24		466 (500-1/2)		560/50		466 (500-1)	
SIDESTEP 25L	720/50		622 (600-1)		720-1 3/8		622 (600-1 3/8)	

ELEV 126	THRE 25R 94
	THRE 25L 98
TDZ/CL Rwy's 6R, 7L, 24R, and 25L HIRL all Rwy's	
FAF to MAP 5.5 NM	
Knots	60 90 120 150 180
Min:Sec	5:30 3:40 2:45 2:12 1:50