

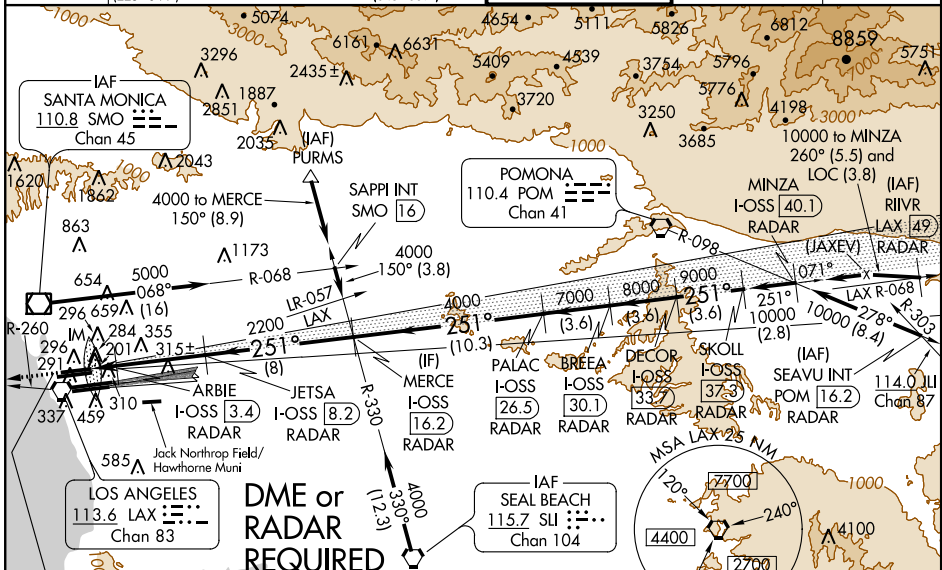
LOC/DME I-OSS <b>108.5</b> Chan 22	APP CRS <b>251°</b>	Rwy Idg THRE Apt Elev	24R <b>8925</b>	24L <b>10285</b> <b>120</b> <b>121</b> <b>126</b> <b>126</b>
--	------------------------	-----------------------------	--------------------	---

# ILS or LOC RWY 24R

## LOS ANGELES INTL (LAX)

**⚠ Inoperative table does not apply to Sidestep Rwy 24L Cats A/B. For inoperative MALS/R, increase S-LOC Rwy 24R Cat D visibility to RVR 5000. Simultaneous approach authorized with LAX 25L/R. Simultaneous approach authorized with HHR 25.**

ATIS ARR <b>133.8</b> DEP <b>135.65</b>	<b>124.3 363.2</b> (ARCH FWA WEST) <b>124.5 235.975</b> (223°-044°)	SOCAL APP CON <b>124.9 269.0</b> (090°-224°) <b>128.5 360.7</b> (045°-089°)	LOS ANGELES TOWER <b>N 133.9 239.3</b> <b>S 120.95 379.1</b>	GND CON <b>N 121.65 327.0</b> <b>S 121.75 327.0</b>	CLNC DEL <b>121.4 327.0</b>
---	--	---	--	---	--------------------------------

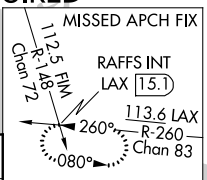


SW-3, 26 JUN 2014 to 24 JUL 2014

SW-3, 26 JUN 2014 to 24 JUL 2014

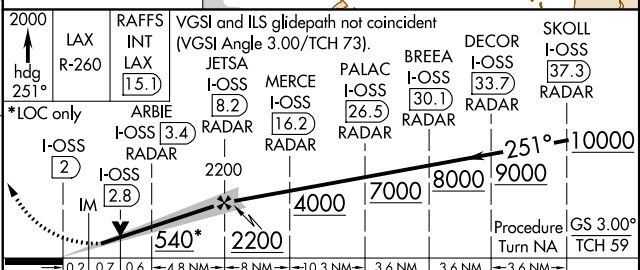
**DME or RADAR REQUIRED**

LOCALIZER <b>108.5</b> I-OSS Chan 22	ELEV 126	THRE 24R 120 THRE 24L 121
--	----------	------------------------------



Procedure NA for arrivals at PURMS via V186 northwest bound.  
 Procedure NA for arrival on SLI VORTAC airway radials 272 CW 319.  
 Procedure NA for arrivals at SMO VOR/DME via V107 westbound.

251° 6.3 NM from FAF					
TDZ/CL Rwy 6R, 7L, 24R, and 25L	HIRL all Rwys				
FAF to MAP 6.3 NM					
Knots	60	90	120	150	180
Min:Sec	6:18	4:12	3:09	2:31	2:06



CATEGORY	A				B			C			D		
S-ILS 24R	320/18 200 (200-1/2)												
S-LOC 24R	460/24			340 (400-1/2)			460/40			340 (400-3/4)			
SIDESTEP RWY 24L	580/50			459 (500-1)			580-1 1/2			459 (500-1 1/2)			