

LOC/DME I-OSS 108.5 Chan 22	APP CRS 251°	Rwy Idg TDZE Apt Elev	8925 120 126
--	------------------------	-----------------------------	---

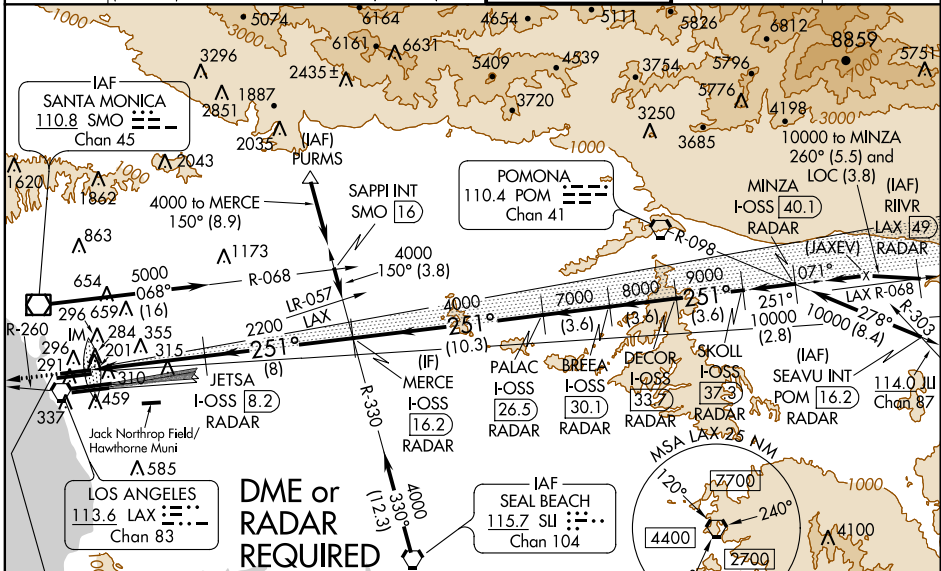
ILS RWY 24R (CAT II & III)

LOS ANGELES INTL (LAX)

Simultaneous approach authorized with LAX 25L/R. Simultaneous approach authorized with HHR 25.

MISSED APPROACH: Climb to 2000 via heading 251° and LAX R-260 to RAFFS INT/LAX 15.1 DME and hold.

ATIS ARR 133.8 DEP 135.65	124.3 363.2 (APCH FM WEST) 124.5 235.975 (225°-044°)	SOCAL APP CON 124.9 269.0 (090°-224°) 128.5 360.7 (045°-089°)	LOS ANGELES TOWER N 133.9 239.3 S 120.95 379.1	GND CON N 121.65 327.0 S 121.75 327.0	CLNC DEL 121.4 327.0
---	---	---	--	---	--------------------------------



SW-3, 26 JUN 2014 to 24 JUL 2014

SW-3, 26 JUN 2014 to 24 JUL 2014

DME or RADAR REQUIRED

LOS ANGELES 113.6 LAX Chan 83

LOCALIZER 108.5 I-OSS Chan 22

MISSED APCH FIX

RAFFS INT LAX 15.1

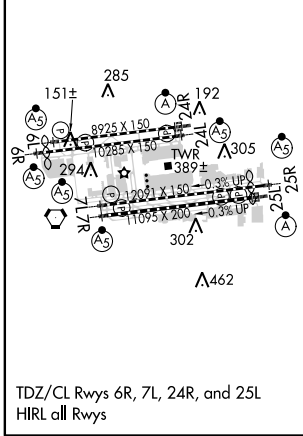
113.6 LAX R-260 Chan 83

Procedure NA for arrivals at PURMS via V186 northwest bound.

Procedure NA for arrival on SLI VORTAC airway radials 272 CW 319.

Procedure NA for arrivals at SMO VOR/DME via V107 westbound.

ELEV 126	TDZE 120
----------	----------



2000	LAX R-260	RAFFS INT LAX 15.1	VGSI and ILS glidepath not coincident (VGSI Angle 3.00/TCH 73).	DECOR I-OSS 33.7 RADAR	SKOLL I-OSS 37.3 RADAR
hdg 251°	JETSA I-OSS 8.2 RADAR	MERC I-OSS 16.2 RADAR	PALAC I-OSS 26.5 RADAR	BREEA I-OSS 30.1 RADAR	I-OSS 33.7 RADAR
120 MSL	225	2200	4000	7000	8000
					9000
					10000
					Procedure Turn NA
					GS 3.00° TCH 59
					-3.6 NM-

CATEGORY	A	B	C	D
S-ILS 24R	CAT II RA 115/12 100 DA 220			
S-ILS 24R	CAT IIIa RVR 07			
S-ILS 24R	CAT IIIb RVR 06			
S-ILS 24R	CAT IIIc NA			

CATEGORY II & III ILS - SPECIAL AIRCREW & AIRCRAFT CERTIFICATION REQUIRED