

FIXIT TWO DEPARTURE (RNAV)

SL-237 (FAA)

LOS ANGELES INTL (LAX)
LOS ANGELES, CALIFORNIA

SW-3, 26 JUN 2014 to 24 JUL 2014

ATIS DEP 135.65
CLINC DEL
121.4 327.0
GND CON
N 121.65 327.0
S 121.75 327.0
LOS ANGELES TOWER
N 133.9 239.3
S 120.95 379.1
SOCAL DEP CON
124.3 363.2 (0445°-224°)
125.2 263.025 (225°-044°)

SAN MARCUS
RZS

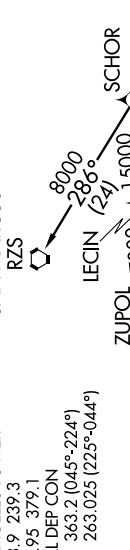
LEGIN

ZUPOL

MCPHR

CEBAD

△ DINTY



NOTE: Maintain at or below 250K unless otherwise directed by ATC.

TAKEOFF MINIMUMS

Rwys 6L/R, 7L/R: NA-ATC.

Rwys 24L/R, 25L/R: Standard with minimum climb of 500' per NM to 640, then minimum climb of 410' per NM to 1200.

NOTE: DME/DME/IRU or GPS required.

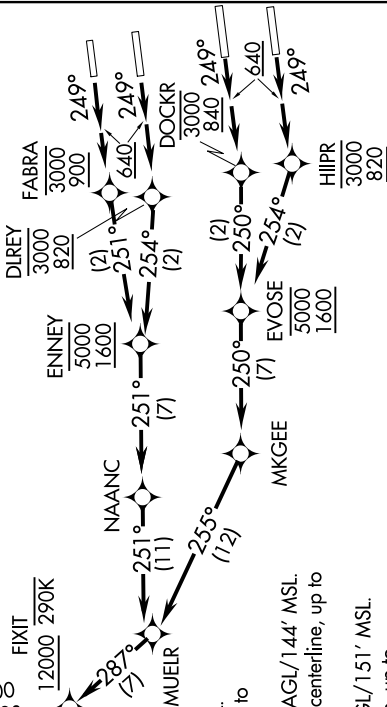
NOTE: RNAV 1.

NOTE: Turboprops only.

NOTE: RADAR required.

NOTE: Maintain at or below 250K unless otherwise directed by ATC.

8000
340
12000 290K



TAKEOFF OBSTACLES NOTES

Rwy 24L: Bush 956' from DER, 600' left of centerline, 40' AGL/148' MSL.
Light poles beginning 273' from DER, 425' left of centerline, up to 10' AGL/120' MSL.

Antenna on pole 1357' from DER, 286' right of centerline, 36' AGL/144' MSL.
Light poles and bushes beginning 239' from DER, 321' right of centerline, up to 8' AGL/116' MSL.

Rwy 24R: OL on glideslope 212' from DER, 399' left of centerline, 39' AGL/151' MSL.
Rwy 25L: Tree and pole beginning 2366' from DER, 764' left of centerline, up to 80' AGL/197' MSL.

Transmission towers beginning 2800' from DER, 926' left of centerline, up to 71' AGL/192' MSL.
Bush 133' from DER, 397' left of centerline, 4' AGL/123' MSL.

(NARRATIVE ON FOLLOWING PAGE)

NOTE: Chart not to scale.

FIXIT TWO DEPARTURE (RNAV)