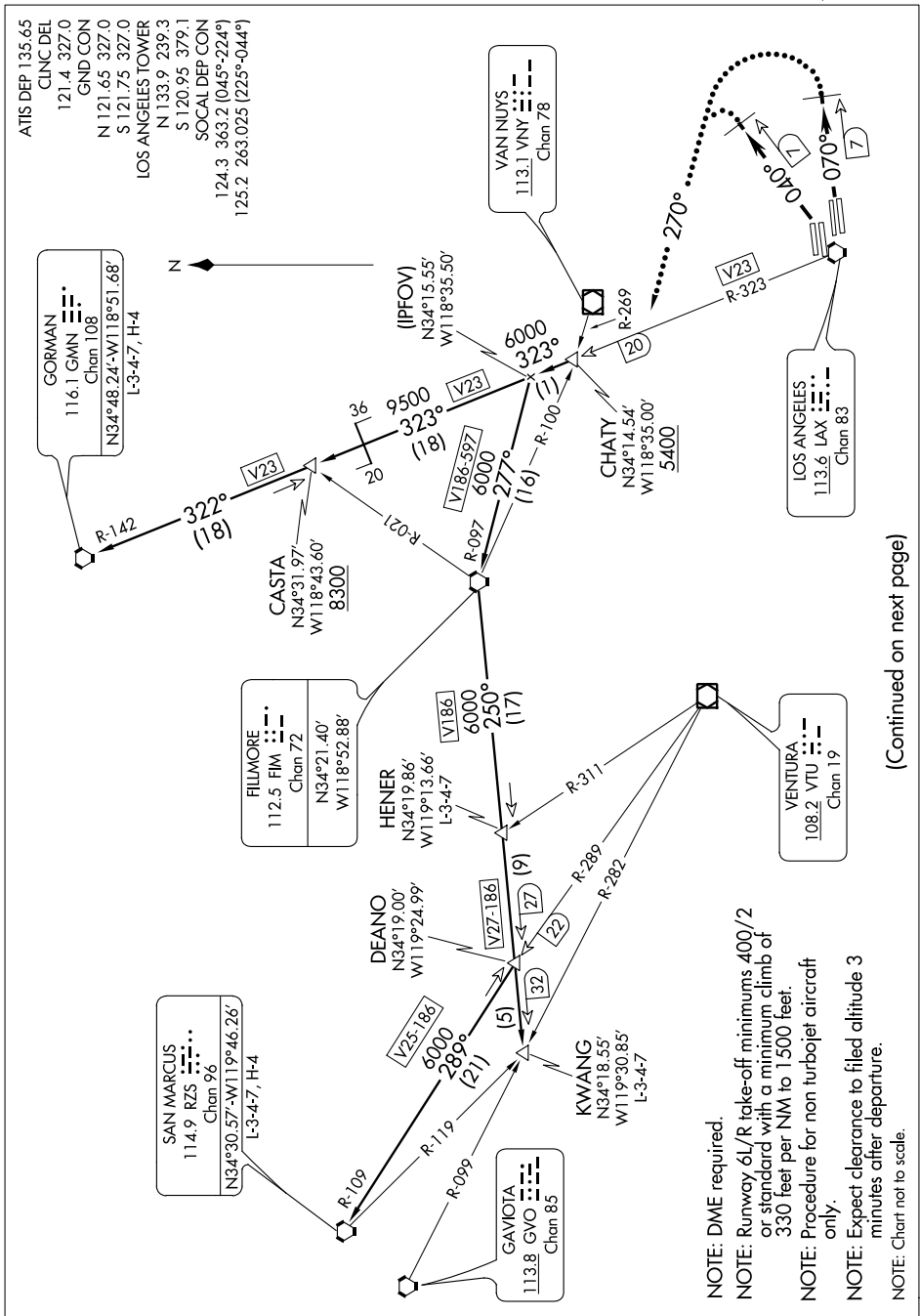


CHATY TWO DEPARTURE

SL-237 (FAA)

LOS ANGELES INTL (LAX)
LOS ANGELES, CALIFORNIA

SW-3, 26 JUN 2014 to 24 JUL 2014



(Continued on next page)

SW-3, 26 JUN 2014 to 24 JUL 2014

CHATY TWO DEPARTURE

LOS ANGELES, CALIFORNIA
LOS ANGELES INTL (LAX)

- NOTE: DME required.
- NOTE: Runway 6L/R take-off minimums 400/2 or standard with a minimum climb of 330 feet per NM to 1500 feet.
- NOTE: Procedure for non turbojet aircraft only.
- NOTE: Expect clearance to filed altitude 3 minutes after departure.
- NOTE: Chart not to scale.