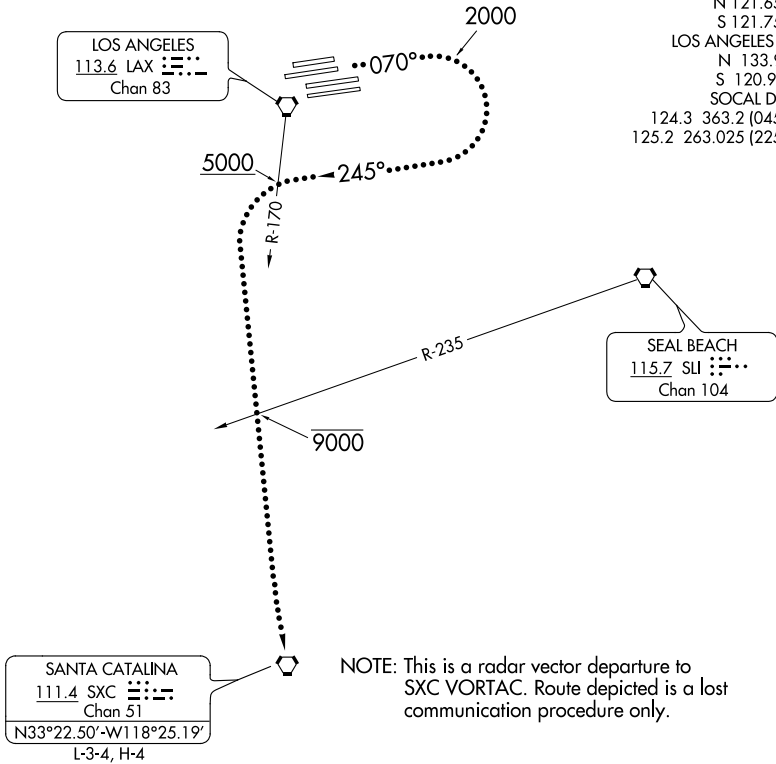


CATALINA FIVE DEPARTURE

SL-237 (FAA)

LOS ANGELES INTL (LAX)
LOS ANGELES, CALIFORNIA

ATIS DEP 135.65
 CLNC DEL 121.4 327.0
 GND CON 121.4 327.0
 N 121.65 327.0
 S 121.75 327.0
 LOS ANGELES TOWER
 N 133.9 239.3
 S 120.95 379.1
 SOCAL DEP CON
 124.3 363.2 (045°-224°)
 125.2 263.025 (225°-044°)



SW-3, 26 JUN 2014 to 24 JUL 2014

SW-3, 26 JUN 2014 to 24 JUL 2014

NOTE: Chart not to scale.

DEPARTURE ROUTE DESCRIPTION

TAKE-OFF RUNWAYS 6/7: Climb via heading 070° for vector to SXC VORTAC. Then via (assigned route). All aircraft expect further clearance to filed altitude three minutes after departure.

LOST COMMUNICATIONS

Take-off Runways 6/7: If not in contact with Departure Control after reaching 2000', turn right heading 245°. Cross LAX R-170 at or above 5000', then turn left proceed direct SXC VORTAC. Cross SLI R-235 at or below 9000'.

CATALINA FIVE DEPARTURE

LOS ANGELES, CALIFORNIA
LOS ANGELES INTL (LAX)