

(CASTA3.CASTA) 14037

SL-237 (FAA)

LOS ANGELES INTL (LAX)
LOS ANGELES, CALIFORNIA

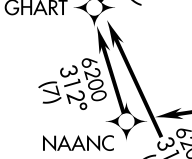
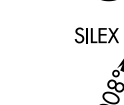
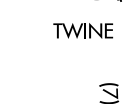
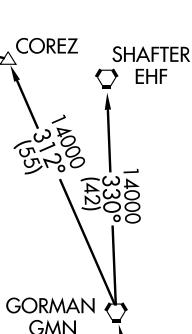
CASTA THREE DEPARTURE (RNAV)



ATIS DEP 135.65
CLNC DEL 121.4 327.0
GND CON (N) 121.65 327.0
(S) 121.75 327.0
LOS ANGELES TOWER (N) 133.9 239.3
(S) 120.95 379.1
SOCAL DEP CON 124.3 363.2 (045°-224°)
125.2 263.025 (225°-044°)

TAKEOFF MINIMUMS

Rwys 6L, 6R, 7L, 7R: NA-ATC.
Rwys 24L, 24R, 25L, 25R: Standard with a minimum climb of 500' per NM to 1800.



NOTE: DME/DME/IRU, or GPS required.

NOTE: RNAV 1.

NOTE: Restricted to TURBOJET AIRCRAFT ONLY.

NOTE: RADAR required.

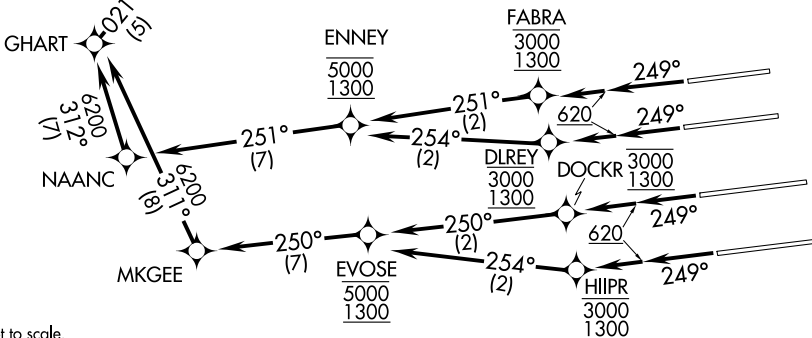
NOTE: Some departures may be RADAR vectored to AJAYE, SILEX, TWINE or OROSZ.

NOTE: Maintain at or below 250 KIAS unless otherwise directed by ATC.

NOTE: Use the VENTURA DEPARTURE during the time periods of 2100-0700 local in lieu of the CASTA DEPARTURE.

NOTE: FOR NON-GPS EQUIPPED AIRCRAFT: PMD DME must be operational for SHAFTER TRANSITION, and EHF DME must be operational for AVENAL TRANSITION.

(NARRATIVE ON FOLLOWING PAGE)
(NOTES CONTINUED ON FOLLOWING PAGE)



NOTE: Chart not to scale.

CASTA THREE DEPARTURE (RNAV)

LOS ANGELES, CALIFORNIA
LOS ANGELES INTL (LAX)

(CASTA3.CASTA) 14037

SW-3, 26 JUN 2014 to 24 JUL 2014

SW-3, 26 JUN 2014 to 24 JUL 2014