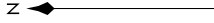


# BUFIE THREE ARRIVAL (RNAV)

ST-237 (FAA)

SW-3, 26 JUN 2014 to 24 JUL 2014

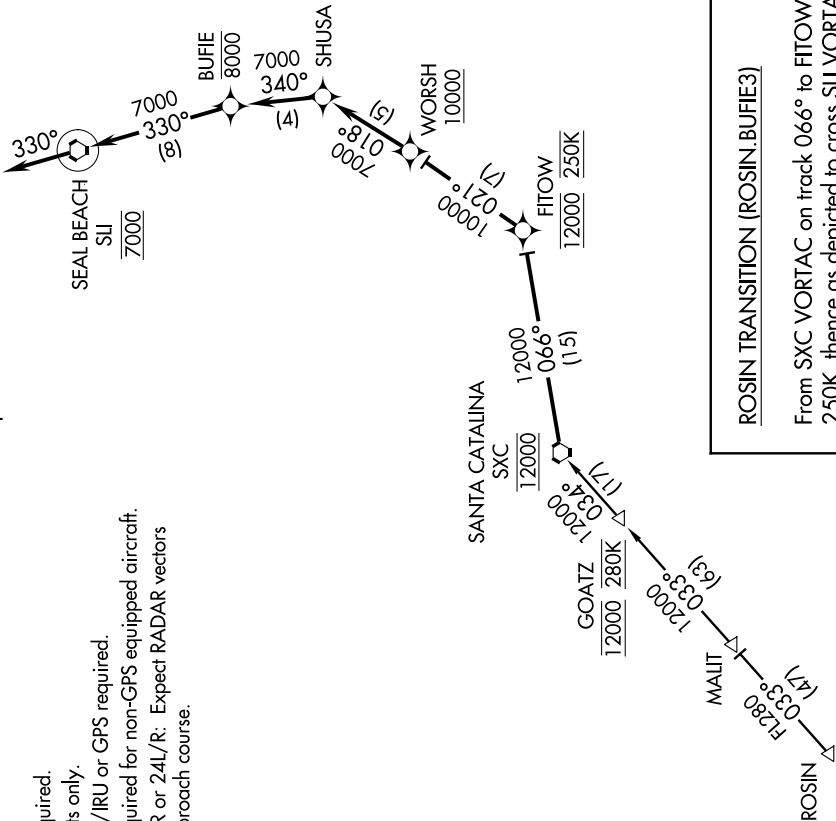
SOCAL APP CON  
127.4 387.02  
LOS ANGELES TOWER  
(N) 133.9 239.3  
(S) 120.95 379.1



NOTE: Chart not to scale.

## ROSIN TRANSITION (ROSIN.BUFIE3)

From SXC VORTAC on track 066° to FITOW. Cross FITOW at 12000 at 250K, thence as depicted to cross SJI VORTAC at 7000. Then on heading 330°, expect RADAR vectors to final approach course.



- NOTE: RNAV 1
- NOTE: RADAR required.
- NOTE: For turbojets only.
- NOTE: DME/DME/IRU or GPS required.
- NOTE: RADAR required for non-GPS equipped aircraft.
- NOTE: Rwy's 25L/R or 24L/R: Expect RADAR vectors to final approach course.



SW-3, 26 JUN 2014 to 24 JUL 2014

# BUFIE THREE ARRIVAL (RNAV)