

LARKS SEVEN ARRIVAL

ST-9077 (FAA)

DENVER, COLORADO

DENVER APP CON
120.35 379.3
BUCKLEY AFB ATIS
119.675 259.3
CENTENNIAL ATIS
120.3
DENVER INTL ATIS ARR
125.6 379.9
FRONT RANGE ATIS
119.025
ROCKY MOUNTAIN METRO ATIS
126.25

GILL
114.2 GLL
Chan 89
N40°30.23'-W104°33.18'

FORT COLLINS-LOVELAND MUNI

GREELEY-WELD COUNTY

DENVER
117.9 DEN
Chan 126
N39°48.75'-W104°39.64'

ROCKY MOUNTAIN METRO

DENVER INTL
FRONT RANGE

JEFFCO
115.4 BJC
Chan 101

HUUGE
N39°34.72'
W104°47.91'

BUCKLEY AFB

RED TABLE
113.0 DBL
Chan 77

LARKS
N39°15.44'-W105°18.31'
**VERTICAL NAVIGATION
PLANNING INFORMATION**

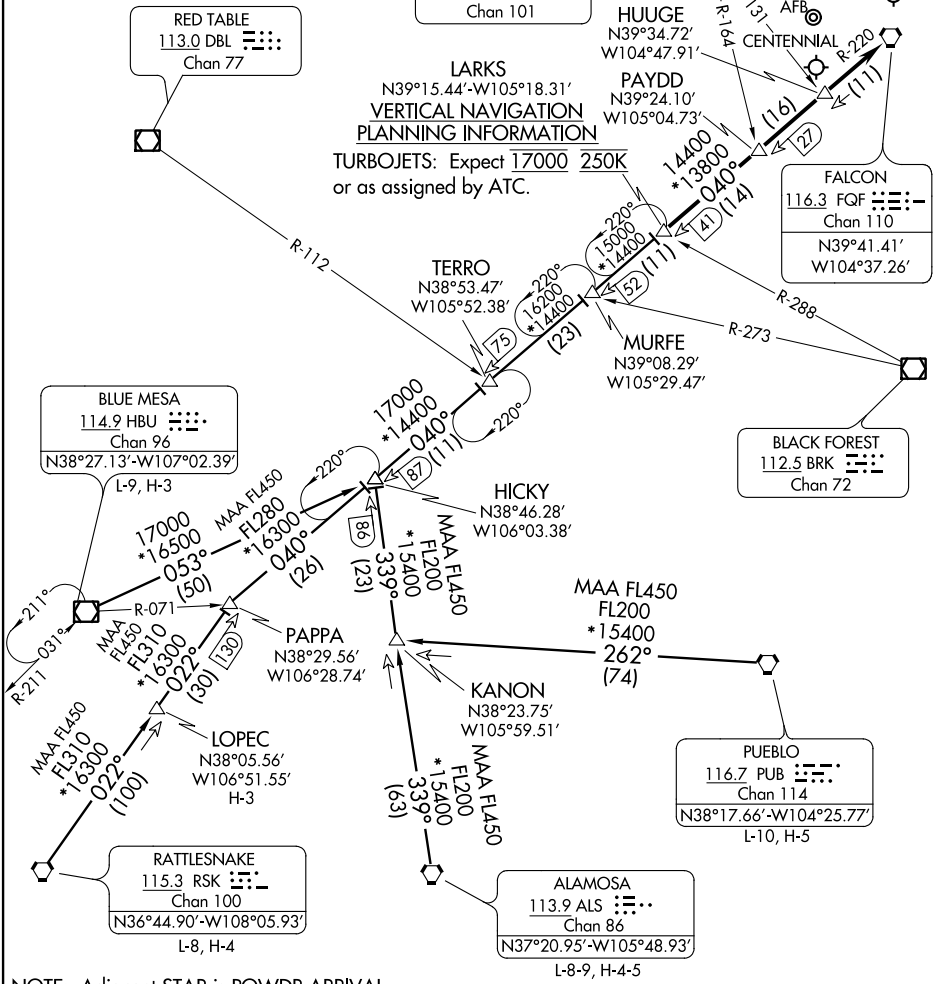
TURBOJET: Expect 17000 250K
or as assigned by ATC.

PAYDD
N39°24.10'
W105°04.73'

FALCON
116.3 FQF
Chan 110
N39°41.41'
W104°37.26'

SW-1, 26 JUN 2014 to 24 JUL 2014

SW-1, 26 JUN 2014 to 24 JUL 2014



NOTE: Adjacent STAR is POWDR ARRIVAL.

NOTE: Chart not to scale.

(NARRATIVE ON FOLLOWING PAGE)

LARKS SEVEN ARRIVAL

DENVER, COLORADO