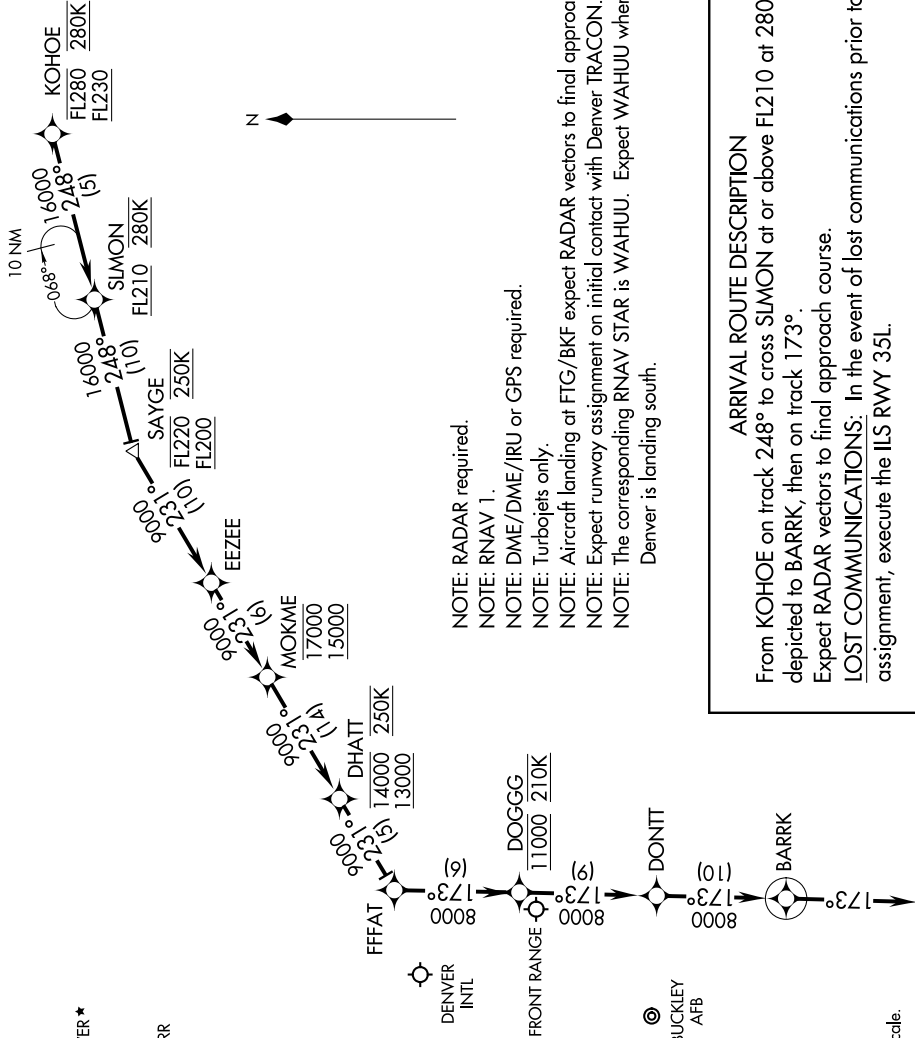


KOHOE TWO ARRIVAL (RNAV) Arrival Route

DENVER, COLORADO

SW-1, 26 JUN 2014 to 24 JUL 2014

- DENVER APP CON
124.95 346.4
- BUCKLEY TOWER *
121.0 291.675
- FRONT RANGE TOWER *
120.2
- BUCKLEY ATIS
119.675 259.3
- DENVER INTL ATIS ARR
125.6 379.9
- FRONT RANGE ATIS
119.025



- NOTE: RADAR required.
- NOTE: RNAV 1.
- NOTE: DME/DME/IRU or GPS required.
- NOTE: Turbojets only.
- NOTE: Aircraft landing at FTG/BKF expect RADAR vectors to final approach course.
- NOTE: Expect runway assignment on initial contact with Denver TRACON.
- NOTE: The corresponding RNAV STAR is WAHUU. Expect WAHUU when Denver is landing south.

ARRIVAL ROUTE DESCRIPTION

From KOHOE on track 248° to cross SIMON at or above FL210 at 280K, thence as depicted to BARRK, then on track 173°.

Expect RADAR vectors to final approach course.

LOST COMMUNICATIONS: In the event of lost communications prior to runway assignment, execute the ILS RWY 35L.

NOTE: Chart not to scale.

KOHOE TWO ARRIVAL (RNAV) Arrival Route

DENVER, COLORADO

SW-1, 26 JUN 2014 to 24 JUL 2014