

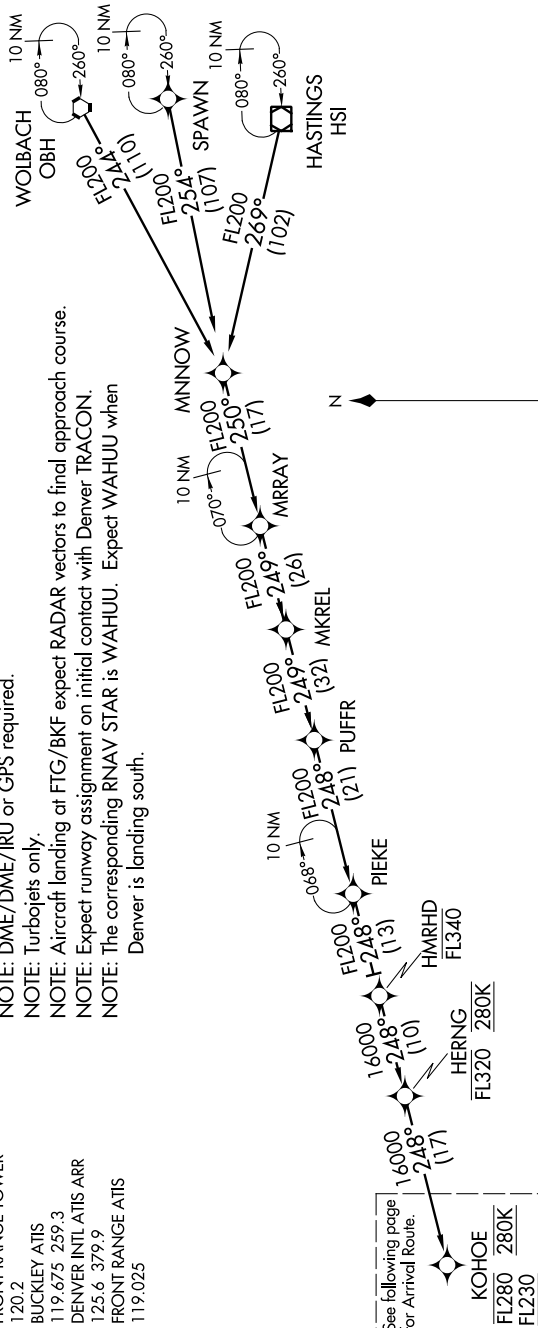
KOHOE TWO ARRIVAL (RNAV) Transition Routes

DENVER, COLORADO

SW-1, 26 JUN 2014 to 22 JUL 2014

DENVER APP CON
 124.95 346.4
 BUCKLEY TOWER *
 121.0 291.675
 FRONT RANGE TOWER *
 120.2
 BUCKLEY ATIS
 119.675 259.3
 DENVER INTL ATIS ARR
 125.6 379.9
 FRONT RANGE ATIS
 119.025

NOTE: RADAR required.
 NOTE: RNAV 1.
 NOTE: DME/DME/IRU or GPS required.
 NOTE: Turbojets only.
 NOTE: Aircraft landing at FTG/BKF expect RADAR vectors to final approach course.
 NOTE: Expect runway assignment on initial contact with Denver TRACON.
 NOTE: The corresponding RNAV STAR is WAHUU. Expect WAHUU when Denver is landing south.



See following page for Arrival Routes.
 KOHOE
 FL280 280K
 FL230

HASTINGS TRANSITION (HSI.KOHOE2)
SPAWN TRANSITION (SPAWN.KOHOE2)
WOLBACH TRANSITION (OBH.KOHOE2)

(CONTINUED ON FOLLOWING PAGE)

NOTE: Chart not to scale.

KOHOE TWO ARRIVAL (RNAV) Transition Routes

DENVER, COLORADO

SW-1, 26 JUN 2014 to 24 JUL 2014