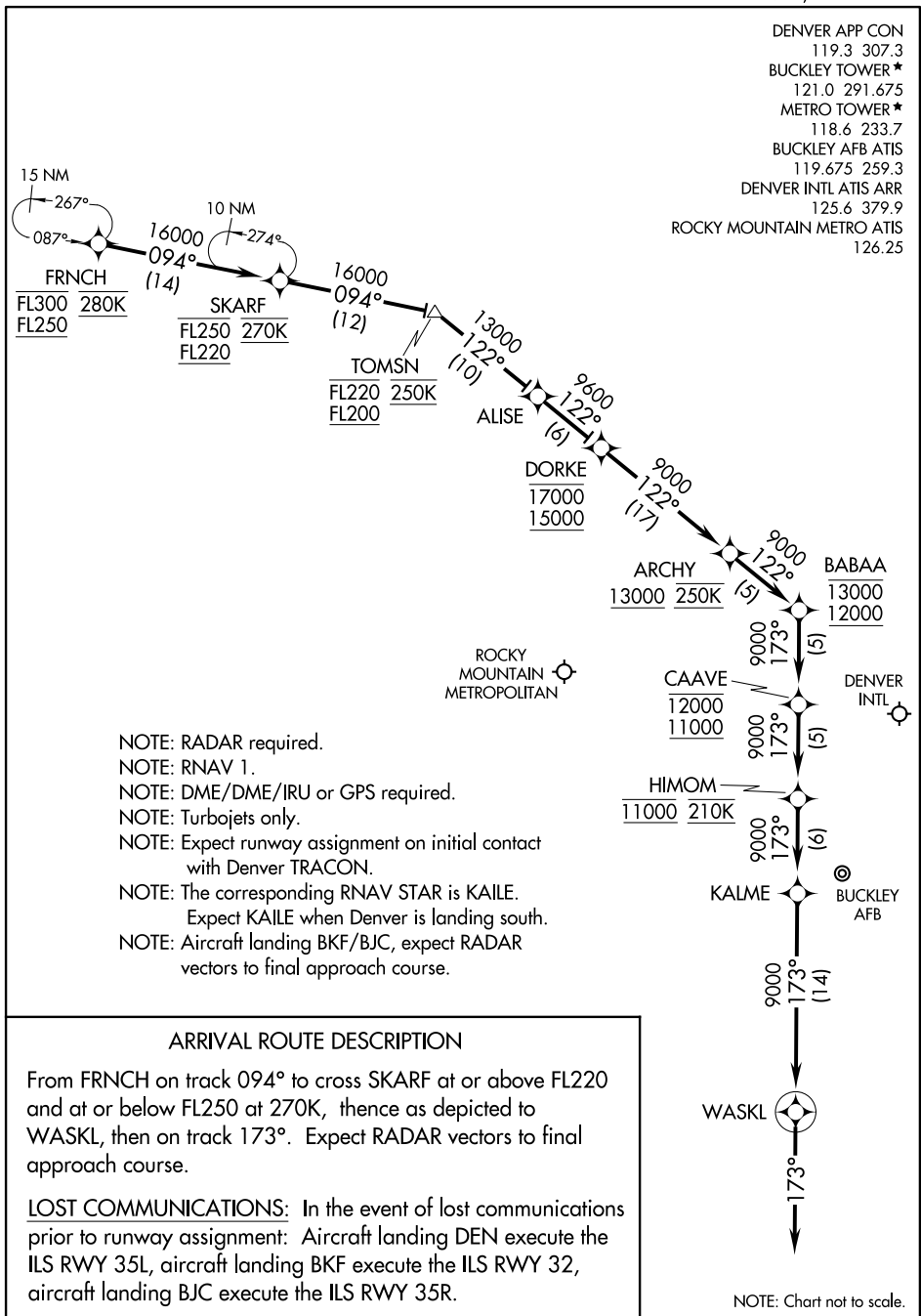


FRNCH TWO ARRIVAL (RNAV) Arrival Routes

DENVER, COLORADO



SW-1, 26 JUN 2014 to 24 JUL 2014

SW-1, 26 JUN 2014 to 24 JUL 2014

- NOTE: RADAR required.
- NOTE: RNAV 1.
- NOTE: DME/DME/IRU or GPS required.
- NOTE: Turbojets only.
- NOTE: Expect runway assignment on initial contact with Denver TRACON.
- NOTE: The corresponding RNAV STAR is KAILE. Expect KAILE when Denver is landing south.
- NOTE: Aircraft landing BKF/BJC, expect RADAR vectors to final approach course.

ARRIVAL ROUTE DESCRIPTION

From FRNCH on track 094° to cross SKARF at or above FL220 and at or below FL250 at 270K, thence as depicted to WASKL, then on track 173°. Expect RADAR vectors to final approach course.

LOST COMMUNICATIONS: In the event of lost communications prior to runway assignment: Aircraft landing DEN execute the ILS RWY 35L, aircraft landing BKF execute the ILS RWY 32, aircraft landing BJC execute the ILS RWY 35R.

NOTE: Chart not to scale.

FRNCH TWO ARRIVAL (RNAV) Arrival Routes

DENVER, COLORADO