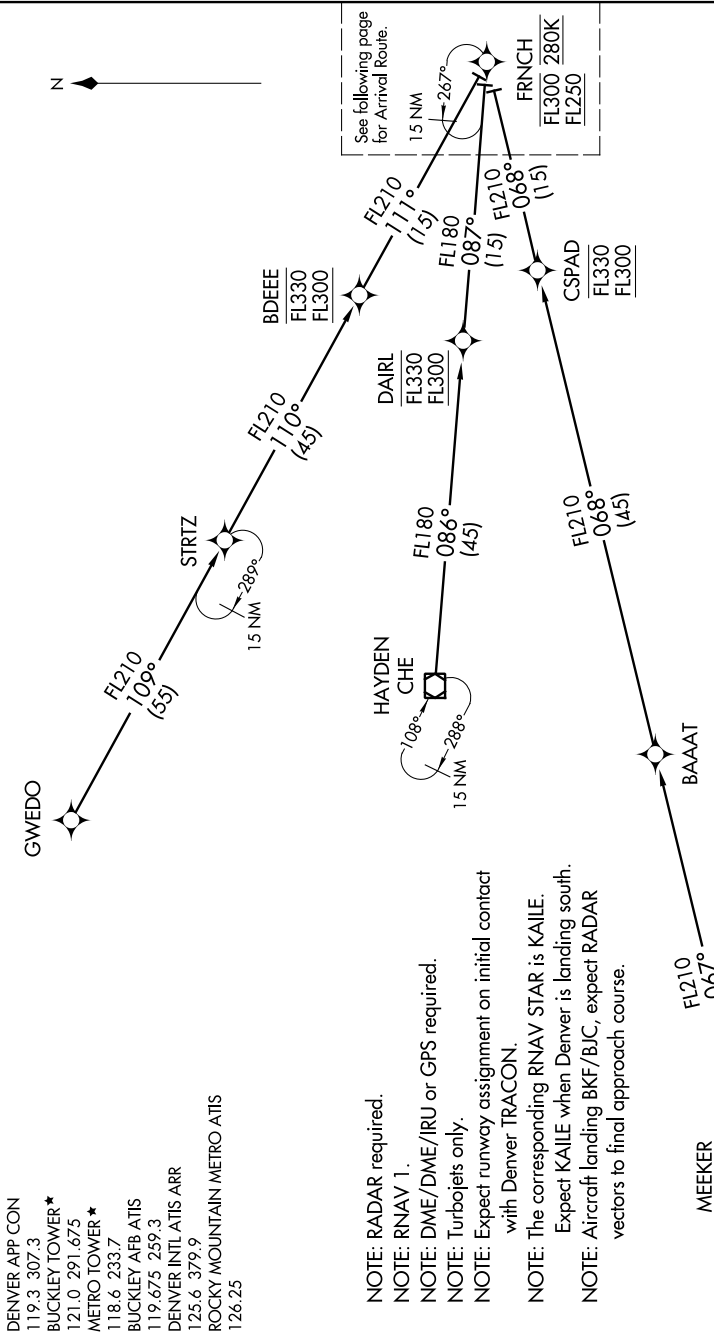


FRNCH TWO ARRIVAL (RNAV) Transition Routes

DENVER, COLORADO

SW-1, 26 JUN 2014 to 24 JUL 2014



- DENVER APP CON 119.3 307.3
- BUCKLEY TOWER * 121.0 291.675
- METRO TOWER * 118.6 233.7
- BUCKLEY AFB ATIS 119.675 259.3
- DENVER INTL ATIS ARR 125.6 379.9
- ROCKY MOUNTAIN METRO ATIS 126.25

- NOTE: RADAR required.
- NOTE: RNAV 1.
- NOTE: DME/DME/IRU or GPS required.
- NOTE: Turbojets only.
- NOTE: Expect runway assignment on initial contact with Denver TRACON.
- NOTE: The corresponding RNAV STAR is KAILIE. Expect KAILIE when Denver is landing south.
- NOTE: Aircraft landing BKF/BJC, expect RADAR vectors to final approach course.

GWEDO TRANSITION (GWEDO.FRNCH2)
HAYDEN TRANSITION (CHE.FRNCH2)
MEEKER TRANSITION (EKR.FRNCH2)

NOTE: Chart not to scale.

(CONTINUED ON FOLLOWING PAGE)