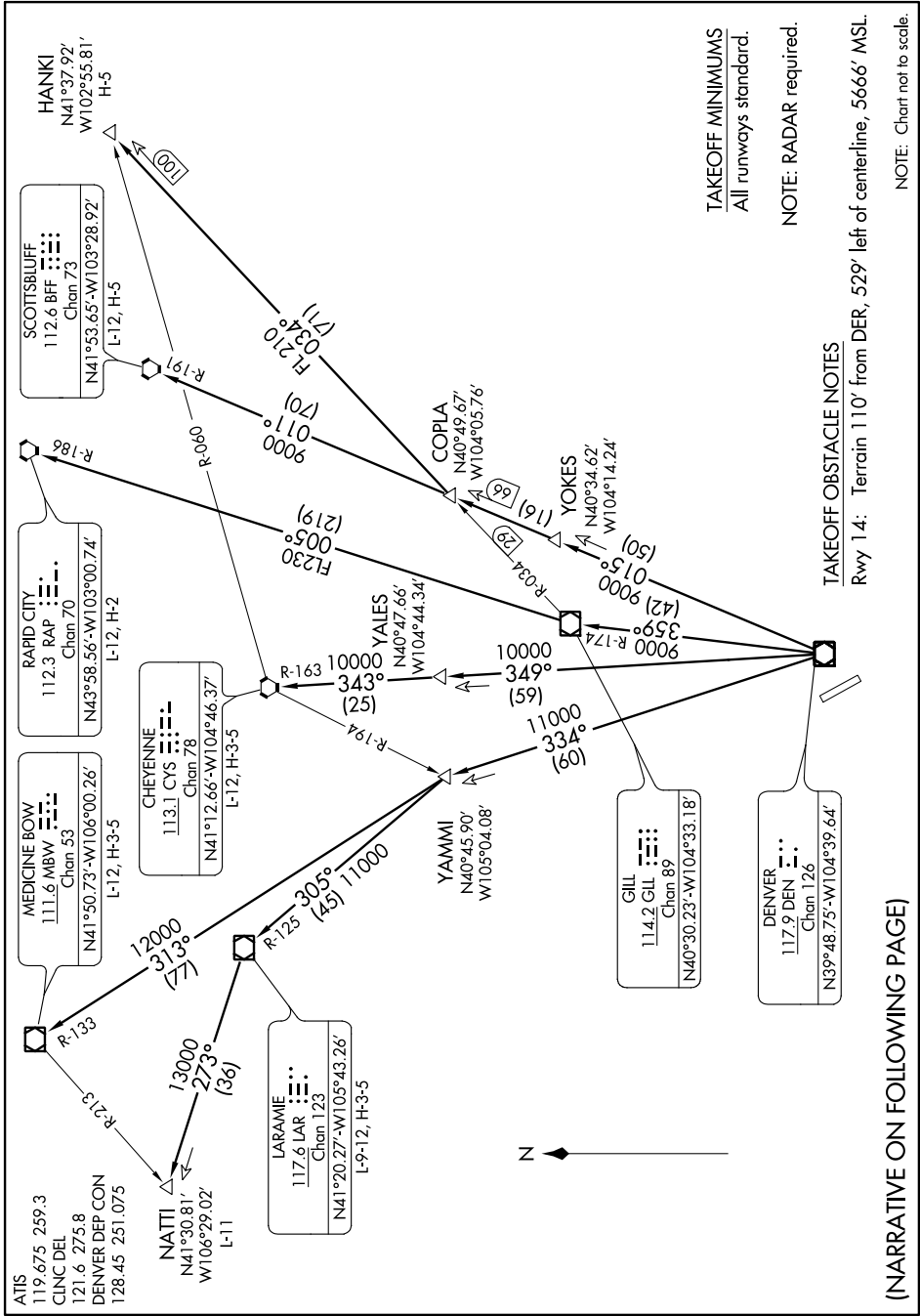


YELLOWSTONE SEVEN DEPARTURE

SW-1, 26 JUN 2014 to 24 JUL 2014



TAKEOFF MINIMUMS
All runways standard.

NOTE: RADAR required.

TAKEOFF OBSTACLE NOTES

Rwy 14: Terrain 110' from DER, 529' left of centerline, 5666' MSL.

NOTE: Chart not to scale.

(NARRATIVE ON FOLLOWING PAGE)

YELLOWSTONE SEVEN DEPARTURE

SW-1, 26 JUN 2014 to 24 JUL 2014